



US006436299B1

(12) **United States Patent**
Baarman et al.

(10) **Patent No.:** **US 6,436,299 B1**
(45) **Date of Patent:** **Aug. 20, 2002**

(54) **WATER TREATMENT SYSTEM WITH AN INDUCTIVELY COUPLED BALLAST**

(75) Inventors: **David W. Baarman**, Fennville; **Roy W. Kuennen**, Caledonia, both of MI (US); **Dennis J. Denen**, Westerville, OH (US); **Terry L. Lautzenheiser**, Nunica, MI (US); **Ronald C. Markham**, Tokyo (JP); **Scott A. Mollema**, Grand Rapids, MI (US)

4,752,401 A	6/1988	Bodenstein	210/746
4,762,613 A	8/1988	Snowball	210/192
4,769,131 A	9/1988	Noll et al.	210/85
4,838,797 A	6/1989	Dodier	439/38
4,857,204 A	8/1989	Joklik	210/695
4,968,437 A	11/1990	Noll et al.	210/748
4,971,687 A	11/1990	Anderson	210/85
5,030,889 A	7/1991	El-Hamamsy et al.	315/200 R
5,041,763 A	8/1991	Sullivan et al.	315/176
5,070,293 A	12/1991	Ishii et al.	320/2

(List continued on next page.)

(73) Assignee: **Amway Corporation**, Ada, MI (US)

(*) Notice: Subject to any disclaimer, the term of this patent is extended or adjusted under 35 U.S.C. 154(b) by 26 days.

(21) Appl. No.: **09/592,194**

(22) Filed: **Jun. 12, 2000**

FOREIGN PATENT DOCUMENTS

AU	A-61741/86	8/1986
DE	42 38 388 A1	5/1994
DE	44 21 253 A1	3/1995
EP	0 825 577 A1	2/1998
JP	08031585	2/1996
WO	WO 97/17761	5/1997
WO	WO 00/32298	6/2000

Related U.S. Application Data

(60) Provisional application No. 60/140,159, filed on Jun. 21, 1999, and provisional application No. 60/140,090, filed on Jun. 21, 1999.

(51) **Int. Cl.**⁷ **C02F 1/30**; C02F 1/32; B01J 19/12; H02B 1/24

(52) **U.S. Cl.** **210/748**; 250/432 R; 250/492.1; 361/674

(58) **Field of Search** 210/739, 742, 210/748, 85, 138, 143, 149, 282; 422/186.3; 250/432 R, 492.1; 361/674

Primary Examiner—David A. Simmons

Assistant Examiner—Fred Prince

(74) *Attorney, Agent, or Firm*—Brinks Hofer Gilson & Lione

(56) **References Cited**

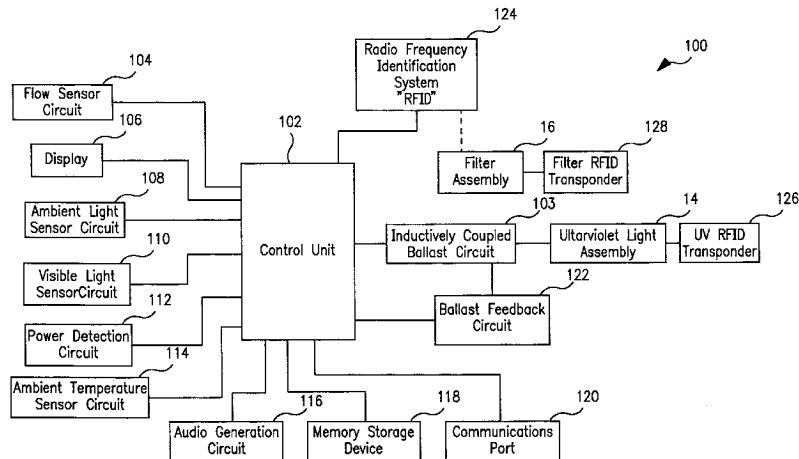
U.S. PATENT DOCUMENTS

3,551,091 A	12/1970	Veloz	21/102
3,867,661 A	2/1975	Waltz et al.	313/26
3,923,663 A	12/1975	Reid	210/443
4,005,330 A	* 1/1977	Glascoek, Jr. et al.	
4,010,400 A	* 3/1977	Hollister	
4,017,764 A	* 4/1977	Anderson	
4,101,777 A	7/1978	Reid	250/436
4,615,799 A	10/1986	Mortensen	210/117
4,675,573 A	6/1987	Miram et al.	315/94

(57) **ABSTRACT**

A fluid treatment system is disclosed that includes a control unit that controls the overall operation of the fluid treatment system. A ballast circuit is coupled with an electromagnetic radiation emitting assembly. In the preferred fluid treatment system, the ballast circuit is inductively coupled with the electromagnetic radiation emitting assembly. The inductively coupled ballast circuit inductively energizes an electromagnetic radiation emitting device that is located in the electromagnetic radiation emitting assembly in response to a predetermined electric signal from the control unit. In addition, the fluid treatment system includes a radio frequency identification system that is used to monitor various functional and operational aspects of the electromagnetic radiation emitting assembly and a filter assembly used in the fluid treatment system.

59 Claims, 12 Drawing Sheets



U.S. PATENT DOCUMENTS

5,078,876 A	1/1992	Whittier et al.	210/315	5,594,304 A	1/1997	Graber	315/85
5,117,156 A	5/1992	Leyh et al.	315/73	5,597,482 A	1/1997	Melyon	210/209
5,141,636 A	8/1992	Flanagan et al.	210/209	5,611,918 A	3/1997	Markham	210/87
5,230,792 A	7/1993	Sauska et al.	210/97	5,643,482 A	7/1997	Sandelman et al.	219/497
5,266,215 A	11/1993	Engelhard	210/748	5,653,877 A	8/1997	Mark	210/259
5,324,423 A	6/1994	Markah	210/87	5,660,719 A	8/1997	Kurtz et al.	210/85
5,344,558 A	9/1994	Kool	210/117	5,703,462 A	12/1997	Woody et al.	320/2
5,368,826 A	11/1994	Weltz et al.	422/243	5,779,912 A	7/1998	Gonzalez-Martin et al.	210/748
5,379,021 A	1/1995	Ito et al.	336/83	5,821,632 A	10/1998	Normann et al.	307/10.1
5,381,073 A	1/1995	Godyak et al.	315/58	5,843,309 A	12/1998	Mancil	210/205
5,397,963 A	3/1995	Manson	315/129	5,853,572 A	12/1998	Kuennen et al.	210/87
5,404,082 A	4/1995	Hernandez et al.	315/219	5,856,710 A	1/1999	Baughman et al.	307/10.1
5,446,277 A	8/1995	Rutter	250/214	5,892,458 A	4/1999	Anderer et al.	340/825.54
5,451,791 A	9/1995	Mark	250/438	5,900,178 A	5/1999	Johnsen	219/497
5,506,560 A	4/1996	Takeuchi et al.	336/83	5,935,431 A	8/1999	Korin	210/205
5,529,689 A	6/1996	Korin	210/232	5,949,155 A	9/1999	Tamura et al.	307/107
5,536,395 A	7/1996	Kuennen et al.	210/87	5,973,455 A	10/1999	Mirskiy et al.	315/105
5,540,848 A	7/1996	Engelhard	210/748	6,008,593 A	12/1999	Ribarich	315/307
5,547,590 A	8/1996	Szabo	210/748	6,035,266 A	3/2000	Williams et al.	702/188
5,573,666 A	11/1996	Korin	210/232	6,037,598 A	3/2000	Cicha	250/455.11
5,583,402 A	12/1996	Moisin et al.	315/307				

* cited by examiner

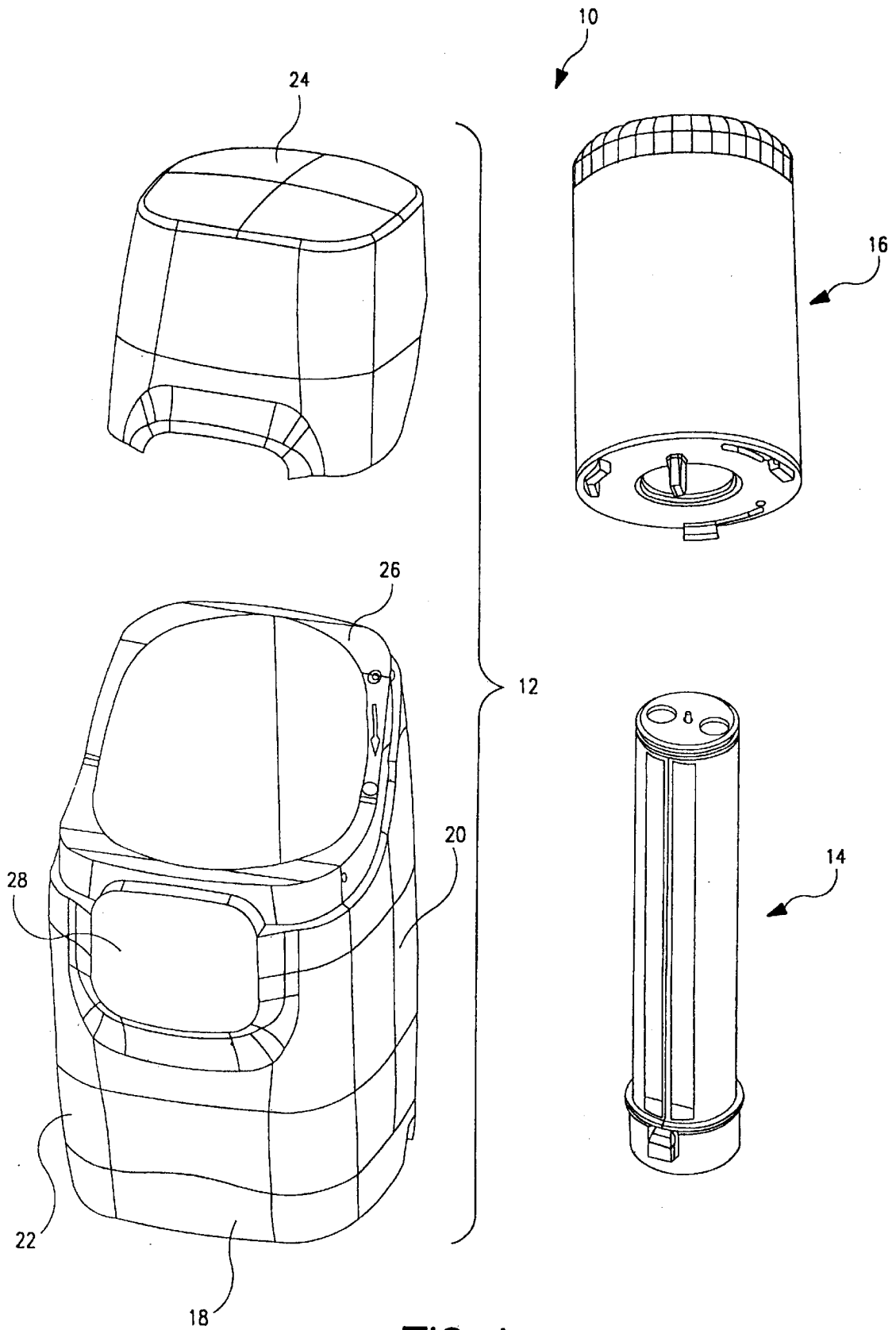


FIG. 1

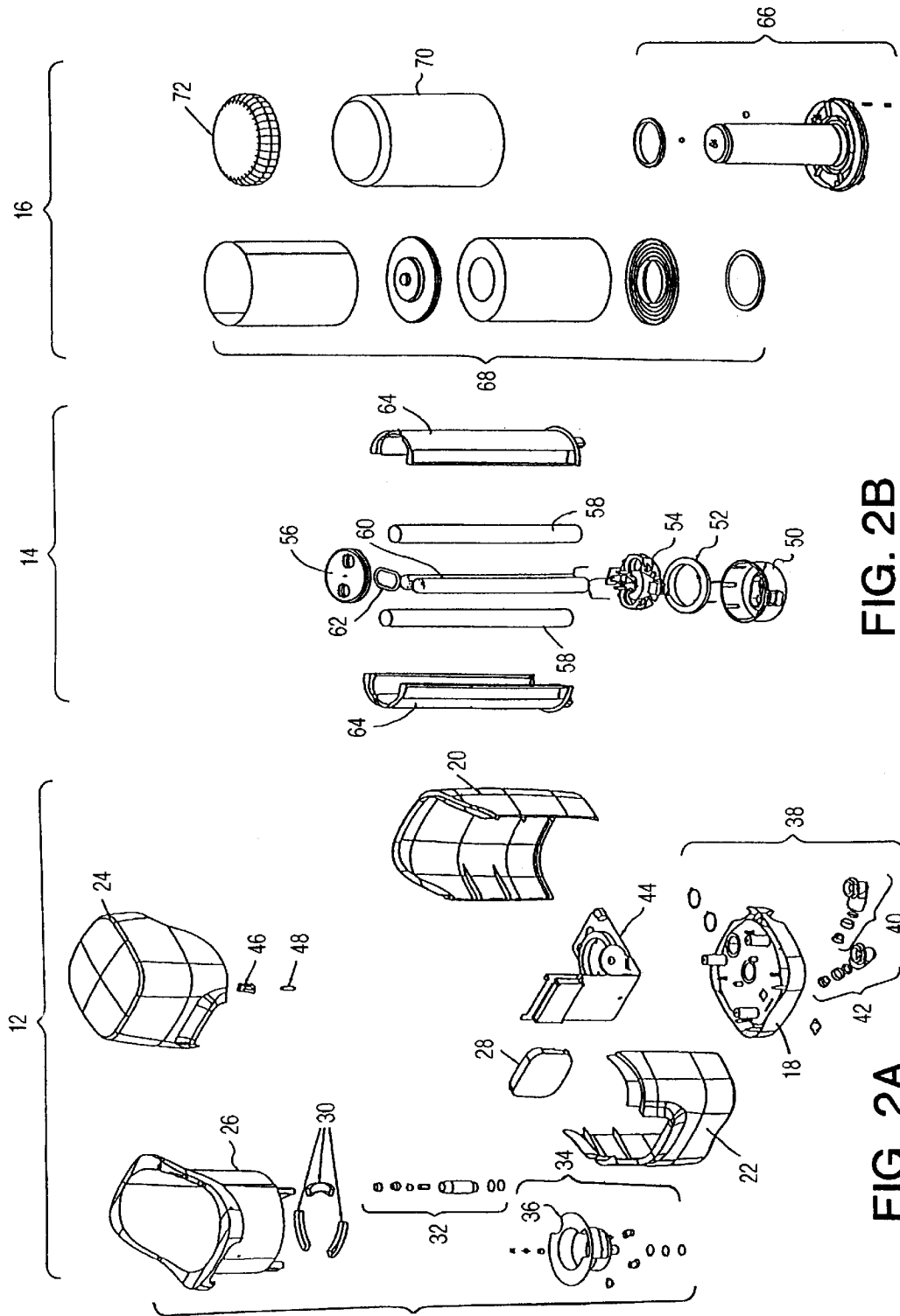


FIG. 2B

FIG. 2A

FIG. 2C

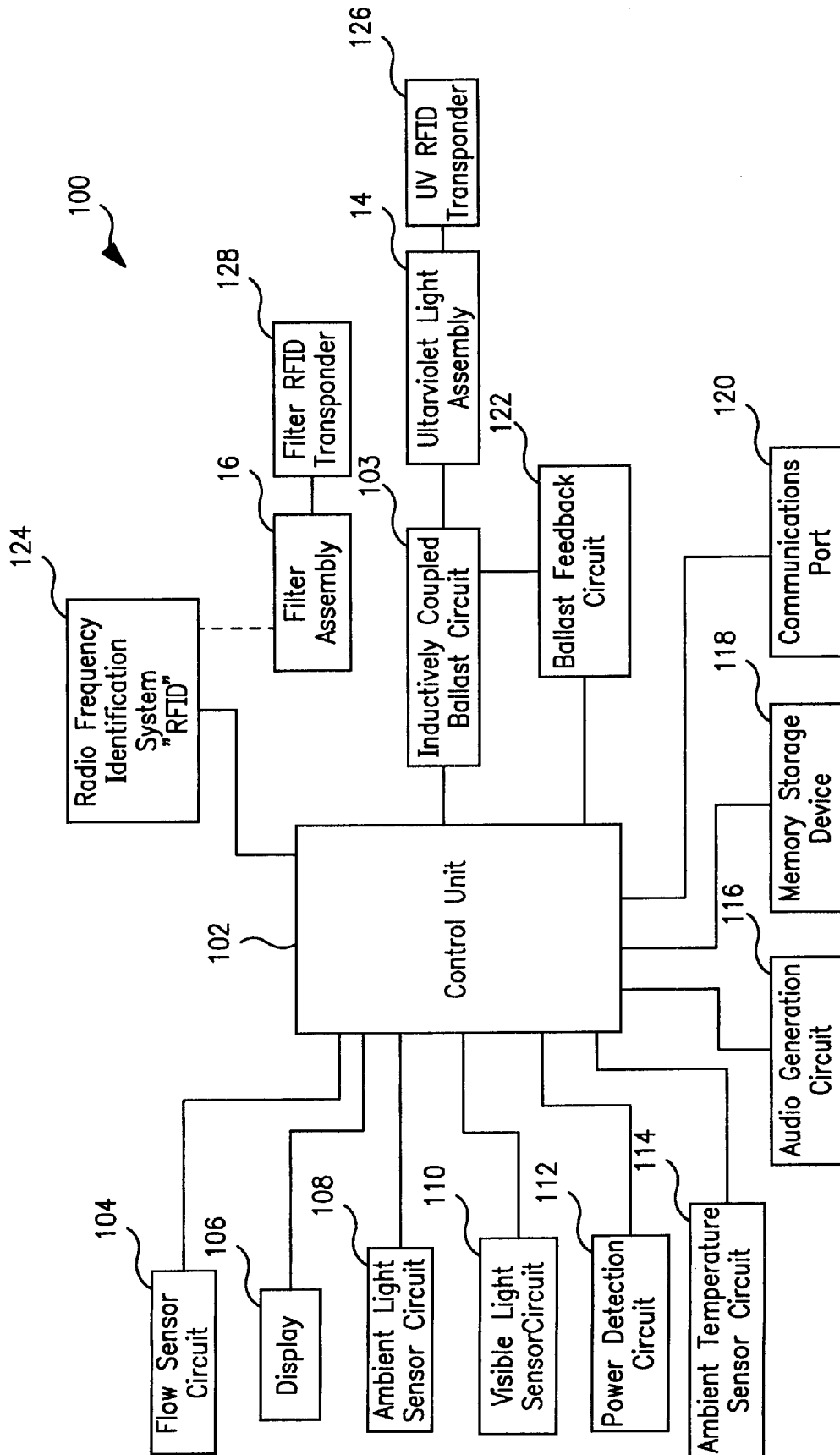


FIG. 3

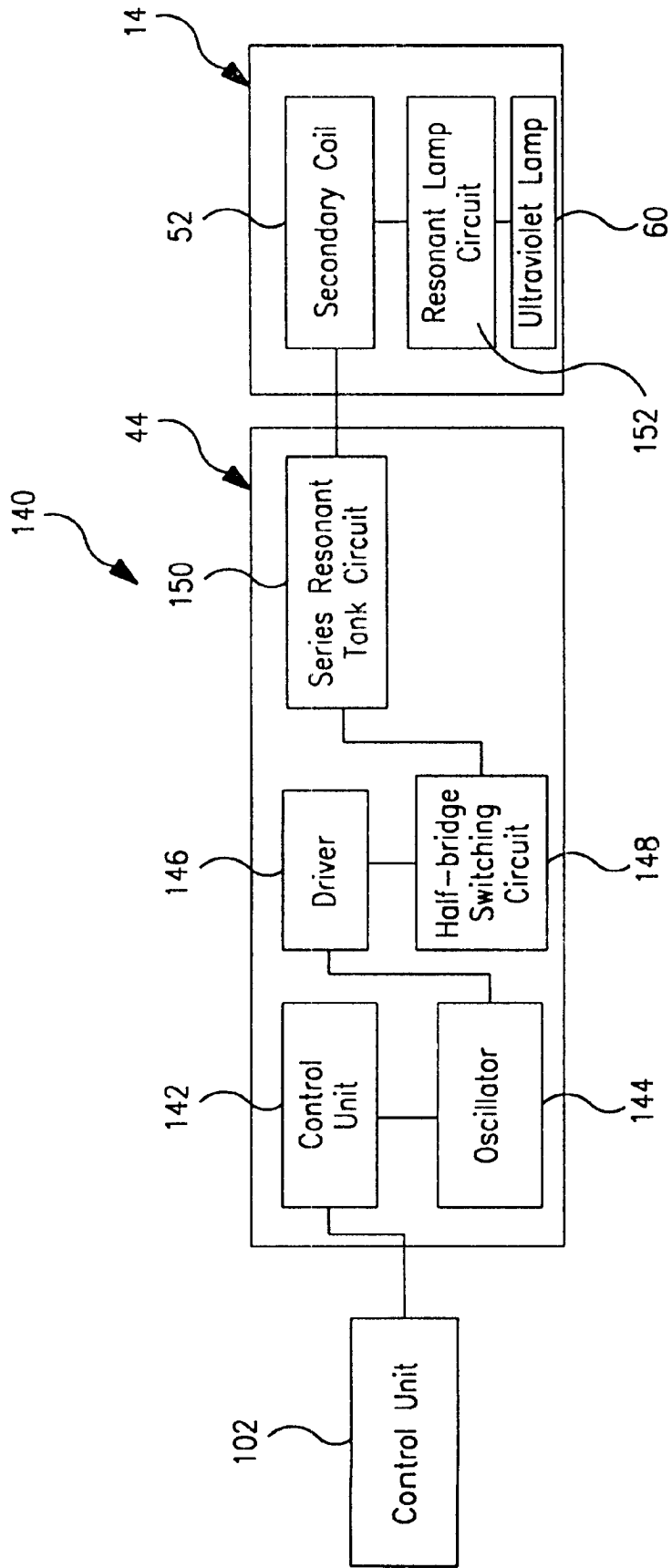


FIG. 4

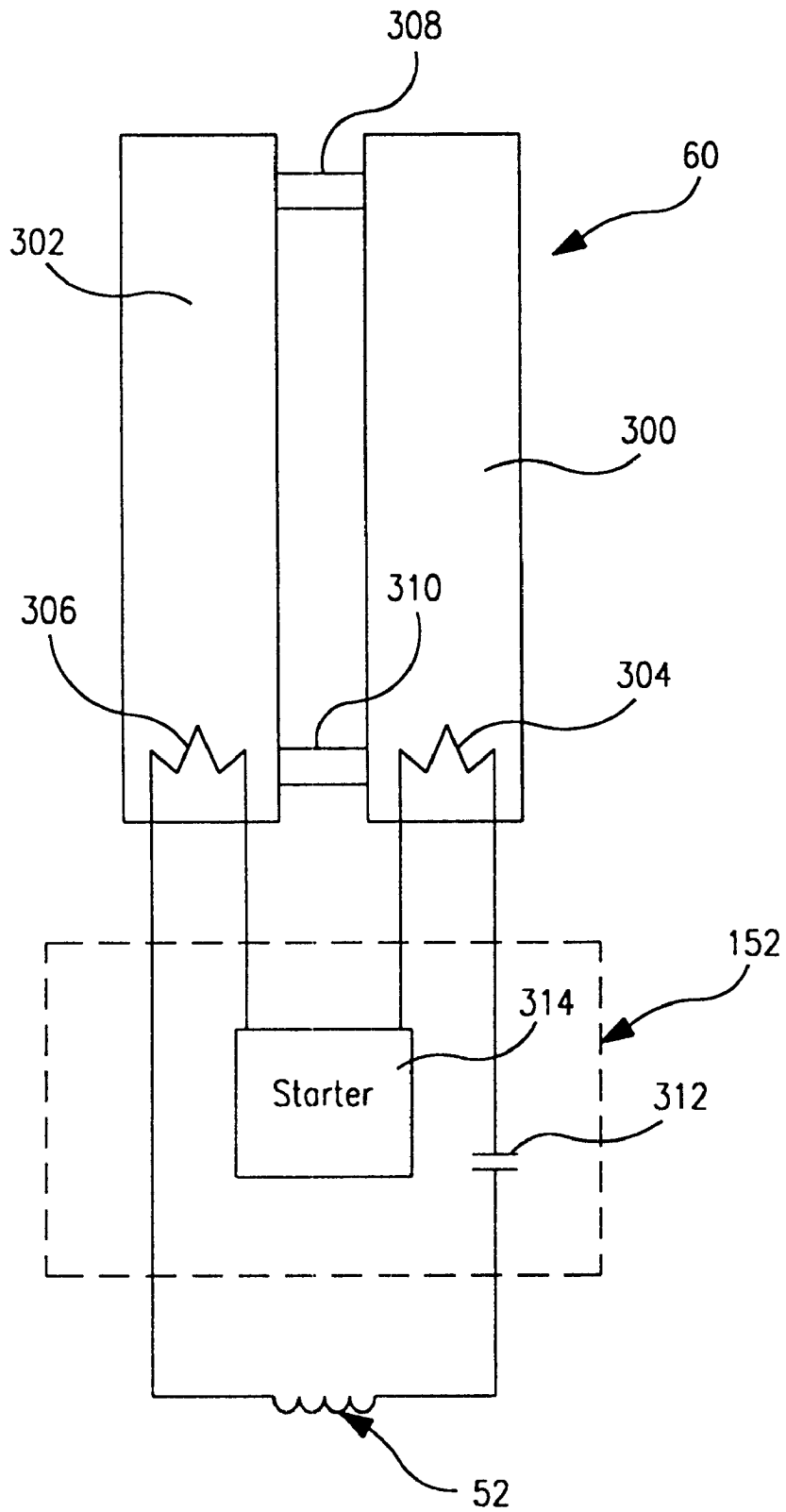


FIG. 6

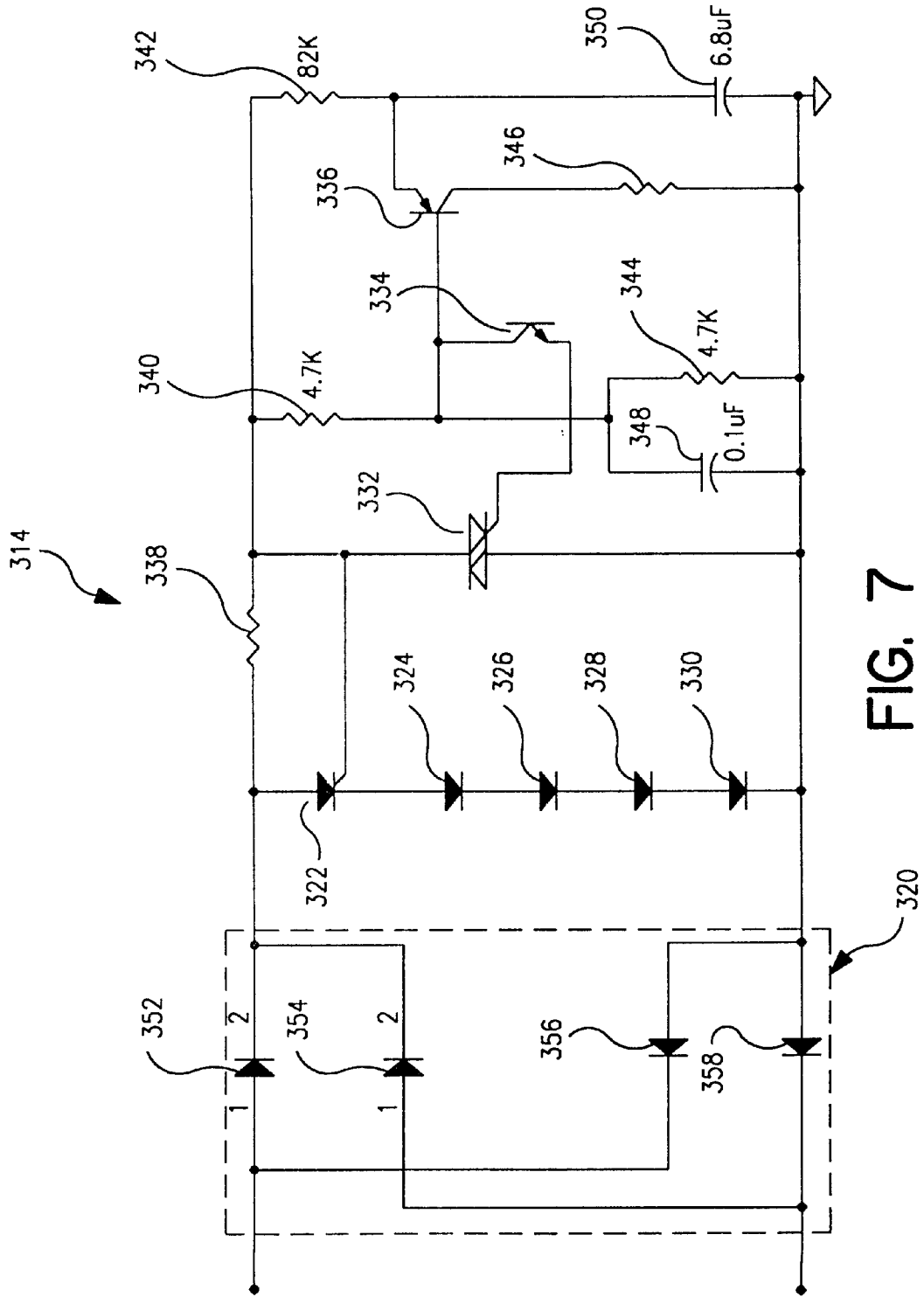


FIG. 7

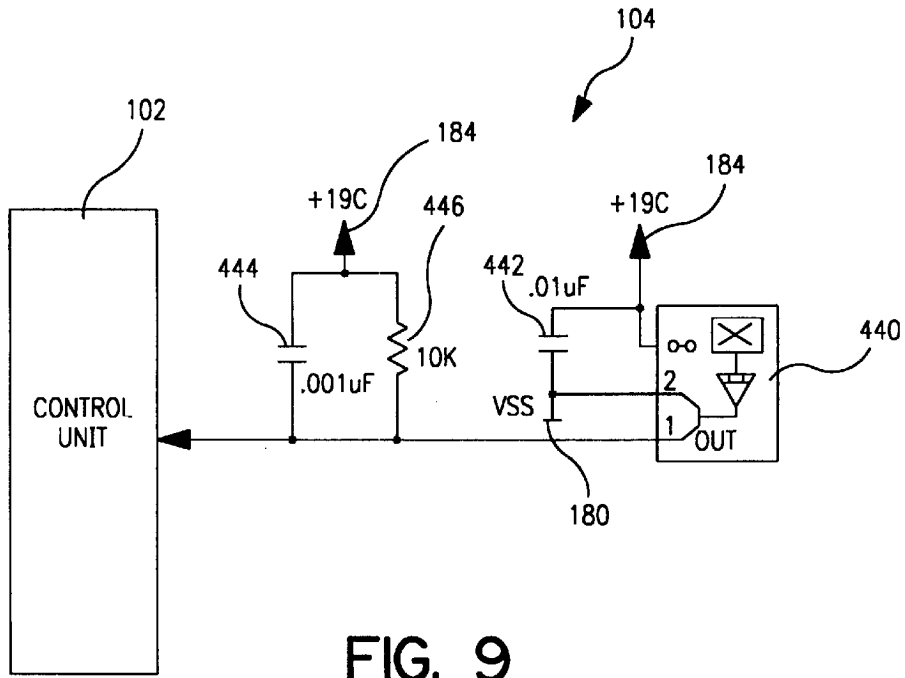


FIG. 9

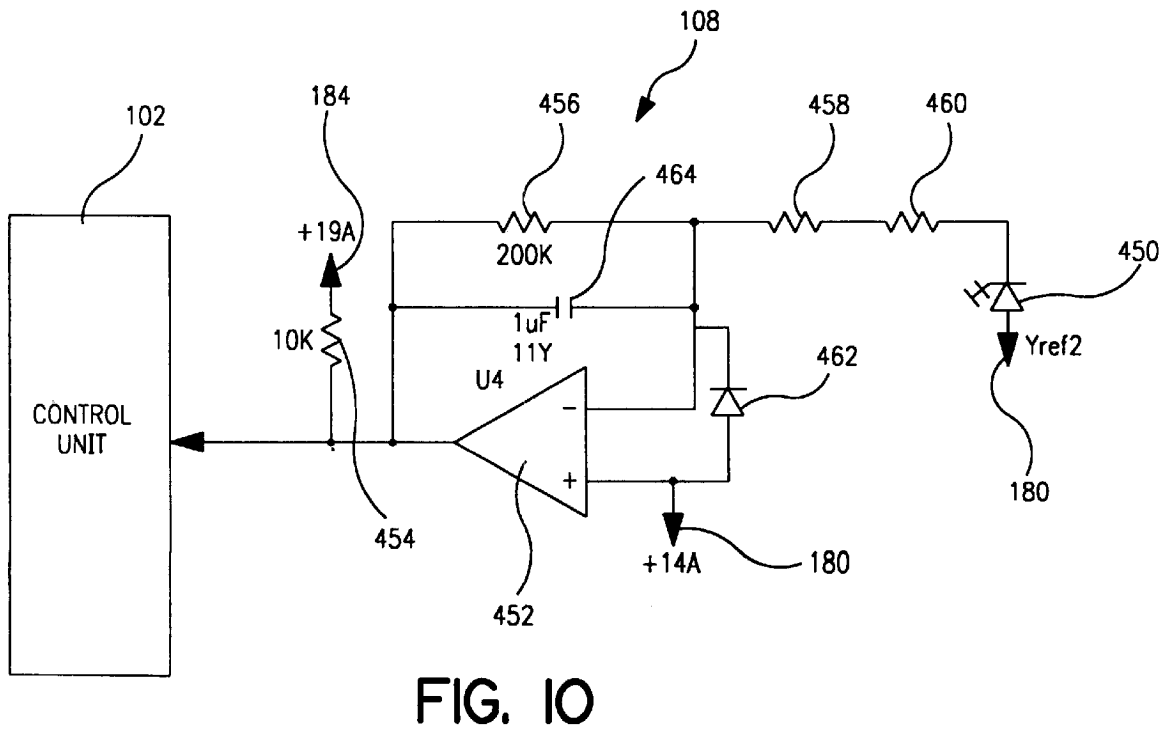


FIG. 10

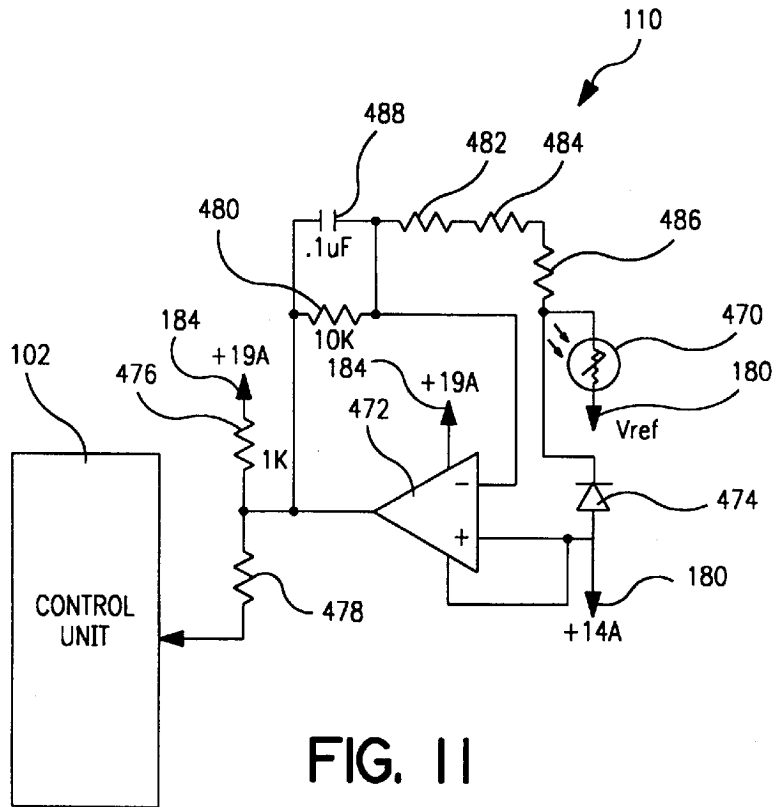


FIG. 11

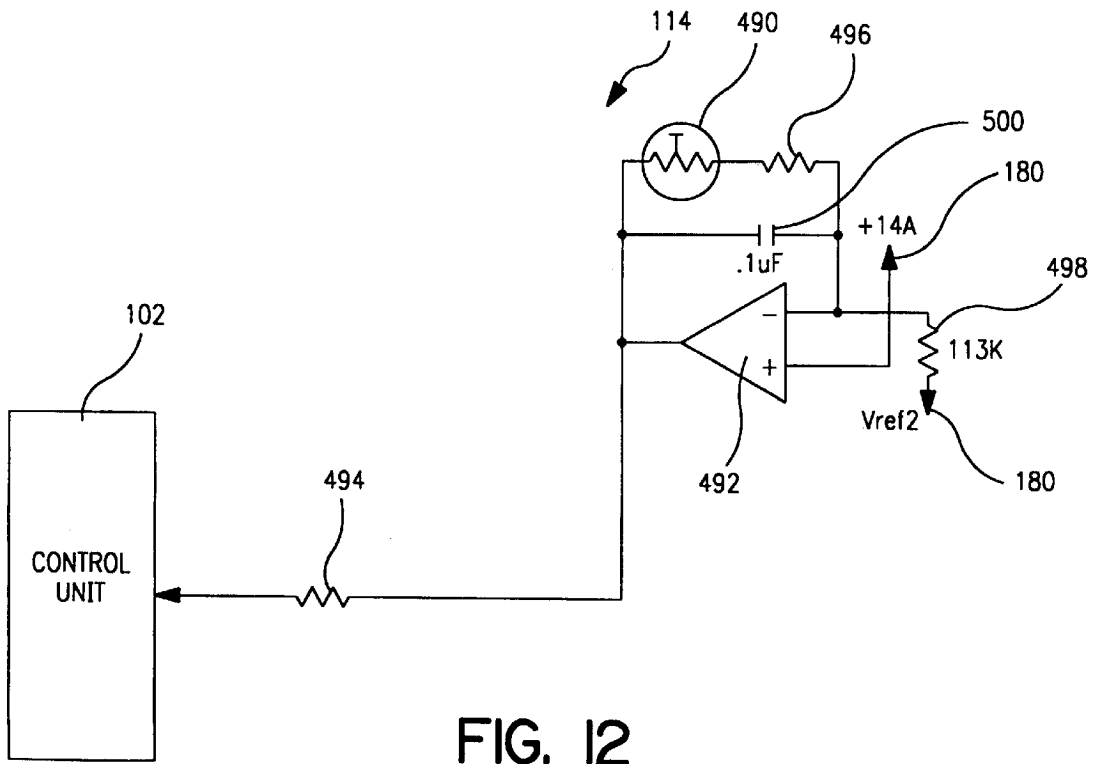


FIG. 12

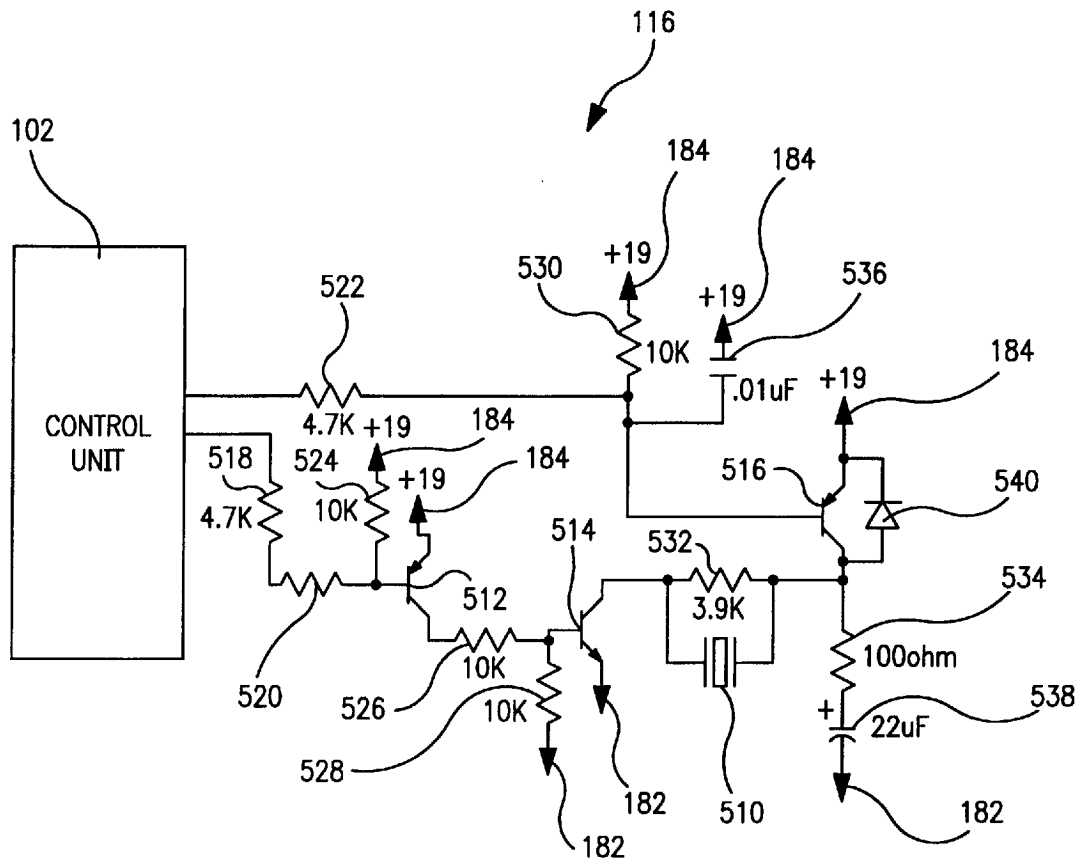


FIG. 13

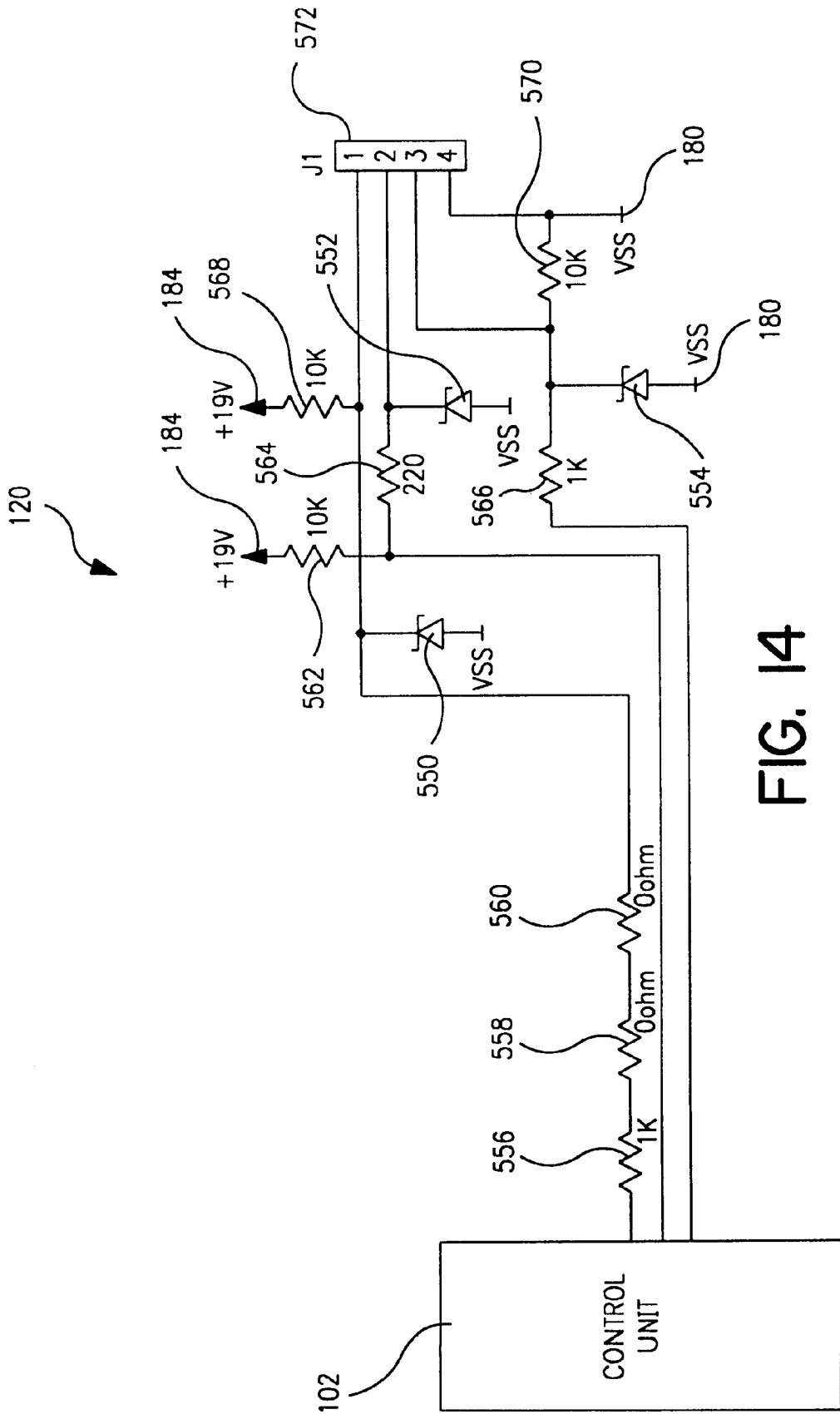


FIG. 14

WATER TREATMENT SYSTEM WITH AN INDUCTIVELY COUPLED BALLAST

This application claims the benefit under 35 U.S.C. §119(e) of U.S. provisional patent application Ser. No.: 60/140,159 entitled Water Treatment System with an Inductively Coupled Ballast, which was filed on Jun. 21, 1999. This application also claims the benefit under 35 U.S.C. §119(e) of U.S. provisional patent application Ser. No. 60/140,090 entitled Point-of-Use Water Treatment System, which was filed on Jun. 21, 1999.

This application hereby incorporates by reference U.S. patent application Ser. No. 09/596,416, entitled Point-of-Use Water Treatment System, which was filed on Jun. 12, 2000.

FIELD OF THE INVENTION

The present invention generally relates to a water treatment system and more particularly, to an inductively coupled ballast for non-contact power transfer to an ultraviolet lamp in the water treatment system.

BACKGROUND OF THE INVENTION

The present invention addresses several problems associated with previous point-of-use home or office water treatment systems. A first problem is that conventional water treatment systems, utilizing lamp assemblies with ultraviolet lamps therein, are energy-inefficient. The lamp assemblies are generally left continuously running to prevent microorganisms from reproducing within the water treatment system as a result of the ultraviolet lamp not being turned on. When a conventional lamp assembly is turned on, it takes a significant amount of start-up time before gas within the ultraviolet lamp is sufficiently excited to output light of a predetermined intensity level required to insure adequate destruction of microorganisms within the water treatment system. Water which is discharged from the water treatment system before an ultraviolet lamp is sufficiently excited may carry an unacceptably high level of live microorganisms. A continuously running lamp assembly uses a significant amount of energy and is, therefore, inefficient. Also, with the lamp assembly left running continuously, such as overnight, water residing within a water treatment system unit can become uncomfortably warm.

A second problem is with the design of reflector assemblies within water treatment systems. In an attempt to increase lamp efficiency, reflector assemblies may be placed about ultraviolet lamps and water-carrying conduits in which the microorganisms are irradiated. Light incident from the ultraviolet lamps which misses striking the water-carrying conduits is reflected back from the reflector walls and have a chance to again impinge upon the water-carrying conduits. Often these reflector assemblies are circular in cross-section. Unfortunately, a lot of the ultraviolet light produced never reaches the water-carrying conduits. Rather, a significant portion of light is reabsorbed by the ultraviolet lamp assembly.

A third problem involves the electrical coupling of the lamp assemblies to the water treatment systems. Every time a lamp assembly is installed in or removed from a water treatment system, the lamp assembly must be mechanically and electrically coupled and uncoupled relative to the water treatment system. This often requires complicated and expensive mounting assemblies. Further, care must be taken to insure that the electrical connections are not exposed to moisture while electrical power is passing through the water treatment system.

Coaxially aligned lamp assemblies and filter assemblies are sometimes used to minimize the size of water treatment systems. A lamp assembly and filter assembly in a particular water treatment system may or may not be simultaneously removed from the water treatment system. If these assemblies are simultaneously removed, they are often very heavy as they may be filled with water and have substantial weight on their own. Alternatively, even if the lamp assembly and filter assembly are separably removable from a water treatment system, quite often problems of water spilling from one of these assemblies during handling.

Another problem faced by water treatment system units having lamp assemblies is that complicated monitoring systems are needed to monitor the lamp assemblies. As a lamp assembly ages, the intensity of light output from the lamp assembly generally diminishes. Eventually, the intensity falls below a level necessary to effect a desired microorganism-kill rate. The lamp assembly should be removed before the critical minimum intensity is reached. Accordingly, a monitor system is required to check on the light intensity within the water treatment system. These monitoring systems are typically expensive. They often require costly ultraviolet sensors with quartz windows.

Conventional ballast control circuits employ bipolar transistors and saturating transformers to drive the lamps. The ballast control circuits oscillate at frequencies related to the magnetic properties of the materials and winding arrangements of these transformers. Circuits with saturating transformer oscillators produce an output in the category of a square wave, require the transistors of the half bridge to hard-switch under load and require a separate inductor to limit the current through the discharge lamp.

These and other deficiencies in prior water treatment system units employing lamp assemblies and filter assemblies are addressed by the present invention.

SUMMARY OF THE INVENTION

The present invention discloses an electronic control system for a water treatment system that includes an inductively coupled ballast circuit. The water treatment system filters water by, amongst other things, directing a flow of water from a water supply to a filter assembly. The filter assembly removes unwanted particulates from the flow of water. After passing through the filter assembly, the water is directed to a replaceable ultraviolet lamp assembly. The ultraviolet lamp assembly destroys organic matter in the supply of water by exposing the water to high-intensity ultraviolet light as the water flows through the ultraviolet lamp assembly. The ultraviolet lamp assembly provides virtually instantaneous high-intensity ultraviolet light at the beginning of operation, which provides advantages over prior art water treatment systems that require warm-up time. After exiting the ultraviolet lamp assembly, the flow of water is directed out of the water treatment system through an outlet assembly.

The overall operation of the water treatment system is controlled by a control unit that is electrically connected with the ultraviolet lamp assembly and the filter assembly. In the preferred embodiment, the control unit is also electrically connected with a flow sensor, an ambient temperature sensor circuit, an ambient light sensor circuit, an ultraviolet light sensor circuit, a power detection circuit, a display, an audio generation circuit, a memory storage device, a communications port and a radio frequency identification system. These devices are all monitored or controlled by the control unit and provide various benefits to the water treatment system, as will be generally set forth below.

The flow sensor circuit is used by the control unit to determine when water is flowing, so that the ultraviolet lamp assembly can be energized, and to keep track of the volume of water that is being processed by the water treatment system. The ambient temperature sensor circuit measures the ambient temperature of the atmosphere, so that the water treatment system can maintain a temperature level above freezing or some other predetermined temperature. The ultraviolet light sensor circuit provides the control unit with electrical signals corresponding to the intensity of the ultraviolet light that is being emitted by the ultraviolet lamp assembly. This is important because these measurements allow the control unit to make adjustments that can increase or decrease the intensity of the ultraviolet light being emitted.

The power detection circuit provides the control unit with electrical signals that indicate the presence or absence of power to the water treatment system that is provided from a conventional external power source, such as a wall outlet. The display is controlled by the control unit and displays information on the status of the water treatment system. The audio generation circuit is used by the control unit to provide audible sounds in case predetermined system states occur in the water treatment system that require attention.

The water treatment system further includes a memory storage device that is electrically connected with the control unit. The memory storage device is used to store various data values related to the water treatment system and its related components. In the preferred embodiment of the present invention, the memory storage device is an EEPROM or some other equivalent storage device. A communications port is connected with the control unit, which provides the ability for bi-directional communication between the control unit and a peripheral device, such as a personal computer or hand-held monitoring device.

The radio frequency identification system includes an ultraviolet light transponder that is located in each ultraviolet lamp assembly. In addition, the radio frequency identification system includes a filter transponder that is located in the filter assembly. The ultraviolet light transponder and the filter transponder communicate, using radio frequency, with the radio frequency identification system. Each transponder contains certain information that is specific to the ultraviolet lamp assembly and the filter assembly. Those skilled in the art would recognize that contact-type identification systems may be used instead of the radio frequency identification system.

The preferred ultraviolet lamp assembly is energized by an inductively coupled ballast circuit. The preferred inductively coupled ballast circuit is a self-oscillating half-bridge switching design that operates at high frequencies that provide virtually instantaneous ultraviolet lamp illumination. In addition, the inductively coupled ballast circuit self-oscillates once resonance is achieved, uses MOSFET transistors as switching elements, and is designed to accommodate an air-core transformer coupling arrangement, which simplifies the design of an ultraviolet lamp assembly. The ultraviolet lamp assembly may be readily replaced, because of the air-core transformer coupling arrangement created by the inductively coupled ballast circuit.

The preferred inductively coupled ballast circuit includes a control circuit, an oscillator, a driver, a half-bridge switching circuit, a series resonant tank circuit, a secondary coil, a resonant lamp circuit and a ultraviolet lamp. The oscillator is electrically connected with the control unit, which starts the oscillator by providing electric signals to the control

circuit that energizes the oscillator. During operation, the oscillator provides electrical signals to the driver, which then causes the half-bridge switching circuit to become energized. The half-bridge switching circuit energizes the series resonant tank circuit that, in turn, inductively energizes the ultraviolet lamp in the ultraviolet lamp assembly.

The ultraviolet lamp assembly physically houses the secondary coil, the resonant lamp circuit and the ultraviolet lamp of the inductively coupled ballast circuit. Once the series resonant tank is energized, the secondary coil in the ultraviolet lamp assembly becomes inductively energized, thereby illuminating the ultraviolet lamp. In the preferred embodiment, the resonant frequency for the inductively coupled ballast circuit is about 100 kHz. As such, the secondary coil in the ultraviolet lamp assembly resonates at about 100 kHz as well. As previously set forth, the resonant frequency of operation can be adjusted up or down by the control unit to accommodate for convenient component selection. In addition, the resonant frequency is also controlled by the component selection in the series resonant tank, which will be set forth in detail below.

As such, a preferred embodiment of the present invention discloses a fluid treatment system that comprises a control unit; an inductively coupled ballast circuit that is inductively coupled with an electromagnetic radiation emitting assembly, wherein the inductively coupled ballast circuit inductively energizes an electromagnetic radiation emitting device in the electromagnetic radiation emitting assembly in response to a predetermined electric signal from the control unit.

Another preferred embodiment of the present invention discloses a method of providing electromagnetic radiation in a fluid treatment system. The method comprises the steps of generating a predetermined electric signal with a control unit; directing the predetermined electric signal to an inductively coupled ballast circuit; and inductively energizing an electromagnetic radiation emitting device in the inductively coupled ballast circuit in response to the predetermined electric signal from the control unit.

In another preferred embodiment of the present, a fluid treatment system with a radio frequency identification system is disclosed. The fluid treatment system comprises a control unit; a base station electrically connected to the control unit; and at least one radio frequency identification transponder located in a electromagnetic radiation emitting device assembly that is in radio communication with the base station. In yet another preferred embodiment of the present invention, the electromagnetic radiation emitting assembly is replaced with a filter assembly.

Another preferred method disclosed by the present invention relates to a method of monitoring electromagnetic radiation emitting assembly information in a fluid treatment system. The method comprises the steps of providing an electromagnetic radiation emitting assembly for use in the fluid treatment system; generating an electromagnetic radiation emitting assembly information signal with an electromagnetic radiation emitting identification transponder located in the electromagnetic radiation emitting assembly; transmitting the electromagnetic radiation emitting assembly information signal to a base station located in the fluid treatment system; and directing said electromagnetic radiation emitting assembly information signal to a control unit. In another preferred embodiment, the electromagnetic radiation emitting assembly can be replaced with a filter assembly.

These and other features and advantages of the invention will become apparent upon consideration of the following

detailed description of the presently preferred embodiments of the invention, viewed in conjunction with the appended drawings.

DETAILED DESCRIPTION OF THE DRAWINGS

FIG. 1 is a perspective view of a main housing of the water treatment system with its top shroud removed and a filter assembly and the ultraviolet lamp assembly removed from the base unit.

FIGS. 2A–C are exploded perspective views of major components of the water treatment system.

FIG. 3 depicts a block diagram of the major circuits and assemblies of the water treatment system.

FIG. 4 depicts a block diagram of the inductively coupled ballast circuit.

FIG. 5 is an electrical circuit schematic of a portion of the inductively coupled ballast circuit, the ballast feedback circuit and the interlock circuit.

FIG. 6 depicts the secondary coil, the resonant lamp circuit and the ultraviolet lamp of the ultraviolet lamp assembly.

FIG. 7 is an electrical circuit schematic of the starter circuit.

FIG. 8 illustrates an electrical circuit schematic of the radio frequency identification system used in the water treatment system

FIG. 9 is an electrical circuit schematic of the flow sensor circuit.

FIG. 10 is an electrical circuit schematic of the ambient light sensor circuit.

FIG. 11 is an electrical circuit schematic of the ultraviolet light sensor circuit.

FIG. 12 is an electrical circuit schematic of the ambient temperature sensor circuit.

FIG. 13 is an electrical circuit schematic of the audible generation circuit.

FIG. 14 is an electrical circuit schematic of the communication port.

DETAILED DESCRIPTION OF THE PRESENTLY PREFERRED EMBODIMENT OF THE INVENTION

Referring to FIG. 1, the present invention discloses an electronic control system for a water treatment system 10 that generally uses carbon-based filters and ultraviolet light to purify water. In order to appreciate the present invention, it is important to have a general background of the mechanical aspects of the preferred water treatment system 10. The preferred water treatment system 10 includes a main housing 12, a replaceable ultraviolet lamp assembly 14 and a filter assembly 16. The ultraviolet lamp assembly 14 and the filter assembly 16 are removable and replaceable from the main housing 12. The main housing 12 includes a bottom shroud 18, a back shroud 20, a front shroud 22, a top shroud 24 and an inner sleeve shroud 26. A lens 28 accommodates a display 106 (see FIG. 3) so that information may be displayed about the status of the water treatment system 10 through the display 106. To assemble the water treatment system 10, the ultraviolet lamp assembly 14 is securely mounted to the main housing 12 and thereafter the filter assembly 16 is mounted over the ultraviolet lamp assembly 14 and to the main housing 12.

As those skilled in the art would recognize, the replaceable ultraviolet lamp assembly 14 may be made in such a

manner that the ultraviolet lamp assembly 14 may not be replaceable. In addition, those skilled in the art would recognize that the replaceable ultraviolet lamp assembly 14 may be interchanged with several different types of electromagnetic radiation emitting assemblies. As such, the present invention should not be construed to cover only water treatment systems that use ultraviolet lamp assemblies and those skilled in the art should recognize that the disclosure of the ultraviolet lamp assembly 14 represents the preferred embodiment of the present invention.

Referring to FIGS. 2A–C, the major mechanical components of the water treatment system 10 are shown in perspective view, as relevant to the present invention. As illustrated in FIG. 2A, the inner sleeve shroud 26 includes a plurality of inner sleeve covers 30, an inlet valve assembly 32 and an outlet cup assembly 34 with an outlet cup 36. A bottom shroud assembly 38 is further disclosed that includes the bottom shroud 18 along with an inlet assembly 40 and an outlet assembly 42. An electronics assembly 44 fits securely in the bottom shroud 18, the details of which will be set forth below in detail. These components are securely mounted to the bottom shroud 18, the back shroud 20, the front shroud 22, the top shroud 24, the inner sleeve shroud 26 and the lens 28 when the water treatment system 10 is fully assembled. A magnet holder 46 and a magnet 48 are also housed in the top shroud 24 in the preferred embodiment.

Referring to FIG. 2B, the ultraviolet lamp assembly 14 generally includes a base subassembly 50, a secondary coil 52, a bottom support subassembly 54, a top support assembly 56, a pair of quartz sleeves 58, an ultraviolet lamp 60, an O-ring 62 and a pair of cooperating enclosure reflector subassemblies 64. Generally speaking, the secondary coil 52, the bottom support subassembly 54 and the enclosure reflector subassemblies 64 are connected with the base subassembly 50. The enclosure reflector subassemblies 64 house the pair of quartz tubes 58, the ultraviolet lamp 60 and the O-ring 62. The top support assembly 56 fits securely over the top of the enclosure reflector assemblies 64 when the ultraviolet lamp assembly 14 is fully assembled.

As illustrated in FIG. 2C, the filter assembly 16 generally includes a base assembly 66, a filter block assembly 68, a filter housing 70 and an elastomeric filter-housing grip 72. Generally speaking, the filter block assembly 68 fits over the base assembly 66 which, in turn, is encapsulated by the filter housing 70. The filter housing grip 72 fits over the top of the filter housing 70, thereby providing a better grip for removing the filter housing 70. The filter assembly 16 filters a flow of water by directing the flow through the filter block assembly 68 before being directed to the ultraviolet lamp assembly 14.

Referring to FIG. 3, the present invention discloses an electronic control system 100 for the water treatment system 10 generally described above. In the preferred embodiment, the water treatment system 10 is controlled by a control unit 102, which is preferably a microprocessor. As illustrated, the control unit 102 is electrically connected with the ultraviolet lamp assembly 14 through an inductively coupled ballast circuit 103. This control unit 102 is also electrically connected to the ultraviolet lamp assembly 14 through two-way wireless communication, as will be set forth in greater detail below. During operation, the control unit 102 is capable of generating a predetermined electric signal that is directed to the inductively coupled ballast circuit, which instantaneously energizes the lamp assembly 14 which, in turn, provides high-intensity ultraviolet light that treats the flow of water.

In the preferred embodiment, the control unit 102 is also electrically connected with a flow sensor circuit 104, a

display 106, an ambient light sensor circuit 108, a visible light sensor circuit 110, a power detection circuit 112, an ambient temperature sensor circuit 114, an audio generation circuit 116, a memory storage device 118, a communications port 120, a ballast feedback circuit 122 and a radio frequency identification system 124. As further illustrated in FIG. 3, an ultraviolet light radio frequency identification transponder 126 is connected with the ultraviolet lamp assembly 14 and a filter radio frequency identification transponder 128 is connected with the filter assembly 16. The ultraviolet radio frequency identification transponder 126 and the filter radio frequency identification transponder 128 communicate with the radio frequency identification system 124 using two-way wireless communication, as will be set forth in greater detail below.

Generally speaking, the flow sensor circuit 104 is used by the control unit 102 to determine when water or fluid is flowing and to keep track of the volume of water or fluid that is being processed by the water treatment system 10. The display 106 is driven by the control unit 102 and is used to display information about the status of the water treatment system 10. Several different types of displays are known in the art and may be used in the present invention; however, the preferred display is a vacuum florescent display. The ambient light sensor circuit 108 measures the amount of ambient light and, in turn, provides electrical signals to the control unit 102 so that it can adjust the intensity of the display 106 accordingly.

The visible light sensor circuit 110 provides the control unit 102 with electrical signals related to the intensity level of the light that is being emitted by the ultraviolet lamp assembly 14. This is important because these signals allow the control unit 102 to increase or decrease the intensity of the electromagnetic radiation being emitted by the ultraviolet lamp assembly 14. Those skilled in the art would recognize that the visible light sensor circuit 110 may be interchanged with various electromagnetic radiation sensor circuits that are capable of sensing the intensity of electromagnetic radiation that is emitted from various electromagnetic radiation emitting devices that may be used in the present invention.

The power detection circuit 112 provides the control unit 102 with electrical signals that indicate the presence or absence of power to the water treatment system 10. Power is provided to the water treatment system 10 from an external power source, such as a conventional power outlet. Those skilled in the art would recognize that several circuits exist that monitor external power sources and provide corresponding electrical signals in response to losses of power.

The ambient temperature sensor circuit 114 measures the ambient temperature of the atmosphere so that the water treatment system 10 can maintain a temperature level above freezing or some other predetermined temperature setting. The control unit 102 can energize the ultraviolet lamp 60 to generate heat if necessary. The audio generation circuit 116 is used by the control unit 102 to generate audible enunciations. The audible enunciations typically occur during predetermined system states that are experienced by the water treatment system 10. These predetermined system states are recognized by the control unit 102 which, in turn, activates the audio generation circuit 116 to create the audible enunciation.

As previously set forth, the memory storage device 118 is also electrically connected with the control unit 102. The memory storage device 118 is used to store various data values related to the water treatment system 10 and its

related components. In the preferred embodiment of the present invention, the memory storage device 118 is an EEPROM or some other equivalent storage device. Those skilled in the art would recognize that various memory storage devices are available that could be used in the present invention.

The communications port 120 is also electrically connected with the control unit 102, which provides the water treatment system 10 with the ability to conduct bi-directional communication between the control unit 102 and a peripheral device, such as a personal computer or hand-held monitoring device. In the preferred embodiment of the present invention, the communications port 120 uses the RS-232 communication platform to communicate with the peripheral device. The communications port 120 may also be connected with the ultraviolet lamp assembly 14 and the filter assembly 16 to monitor and control various operational characteristics of these devices in other preferred embodiments. However, in the preferred embodiment of the invention, the radio frequency identification system 124 is used to report information to the control unit 102 about the ultraviolet lamp assembly 14 and the filter assembly 16.

In the preferred embodiment depicted in FIG. 3, the radio frequency identification system 124 uses signals from the ultraviolet light radio frequency identification transponder 126 and the filter radio frequency identification transponder 128 to report various information to the control unit 102. During operation, the ultraviolet light radio frequency identification transponder 126 and the filter radio frequency identification transponder 128 communicate with the radio frequency identification system 124 using wireless communication. Since the ultraviolet lamp assembly 14 and the filter assembly 16 are designed to be replaceable at the end of its useful life, each ultraviolet lamp assembly 14 and filter assembly 16 contains a transponder 126, 128 that stores information specific to each device. Those skilled in the art would recognize that the ultraviolet light radio frequency transponder could be used in conjunction with other electromagnetic radiation emitting devices or assemblies. The radio frequency identification system 124 is set forth in greater detail below.

Referring to FIG. 4, in the present preferred embodiment of the invention, the ultraviolet lamp assembly 14 is energized by an inductively coupled ballast circuit 103 that is electrically connected with the control unit 102. The inductively coupled ballast circuit 103 is a self-oscillating, half-bridge switching design that operates at high frequencies providing virtually instantaneous ultraviolet lamp illumination. In addition, the inductively coupled ballast circuit 103 self-oscillates once resonance is achieved, uses MOSFET transistors as switching elements, and is designed to accommodate an air-core transformer coupling arrangement, which simplifies the design of an ultraviolet lamp assembly 14. The ultraviolet lamp assembly 14 or other electromagnetic radiation emitting assemblies may be readily replaced because of the air-core transformer coupling arrangement created by the inductively coupled ballast circuit 103. Those skilled in the art would recognize that inductively coupled ballast circuit 103 can be adapted to function as a normal ballast circuit as well.

As illustrated in FIG. 4, the inductively coupled ballast circuit 103 includes a control circuit 142, an oscillator 144, a driver 146, a half-bridge switching circuit 148, a series resonant tank circuit 150, the secondary coil 52 (see FIG. 2), a resonant lamp circuit 152 and the ultraviolet lamp 60. The oscillator 144 is electrically connected with the control unit 102, which energizes the oscillator 144 by providing electric

signals to the control circuit 142. During operation, the oscillator 144 provides electrical signals to the driver 146, which then causes the half-bridge switching circuit 148 to become energized. The half-bridge switching circuit 148 energizes the series resonant tank circuit 150 that, in turn, inductively energizes the ultraviolet lamp 60 in the ultraviolet lamp assembly 14.

As further illustrated in FIG. 4, the ultraviolet lamp assembly 14 houses the secondary coil 52, the resonant lamp circuit 152 and the ultraviolet lamp 60 while the electronic assembly 44 (see FIG. 2A) houses the control circuit 142, the oscillator 144, the driver 146, the half-bridge switching circuit 148 and the series resonant tank circuit 150. As previously set forth, once the series resonant tank circuit 150 is energized, the secondary coil 52 in the ultraviolet lamp assembly 14 becomes inductively energized. In the preferred embodiment, the resonant frequency for the ballast circuit 103 is about 100 kHz. As such, the secondary coil 52 in the ultraviolet lamp assembly 14 resonates at about 100 kHz as well. As previously set forth, the resonant frequency of operation can be adjusted up or down by the control unit 102 to accommodate for convenient component selection. In addition, the resonant frequency may also be controlled by the component selection in the series resonant tank circuit 150, which will be set forth in greater detail later.

Referring to FIG. 5, the control circuit 142 is electrically connected with the control unit 102 and the oscillator 144. The control circuit 142 includes a plurality of resistors 156, 158, 160, 162, 164, 166, a plurality of capacitors 168, 170, 172, a diode 174, a first operational amplifier 176 and a second operational amplifier 178. As illustrated, resistor 156 is connected with a first direct current ("DC") power source 180, the output of the control unit 102 and resistor 158. Resistor 158 is further connected with diode 174, resistor 160 and capacitor 168. The first DC power source 180 is connected with capacitor 168, which is also connected with diode 174. Diode 174 is further connected with a ground connection 182, as those skilled in the art would recognize. Resistor 160 is connected with the negative input of operational amplifier 176 and the positive input of operational amplifier 178 to complete the current path from the control unit 102 to the operational amplifiers 176, 178.

Referring once again to the control circuit 142 depicted in FIG. 5, resistor 162 is connected with a second DC power source 184 and in series with resistors 164 and 166. Resistor 166 is connected with the ground connection 182 and capacitor 170, which is, in turn, connected with the first DC power source 180 and resistor 164. The positive input of operational amplifier 176 is electrically connected between resistors 162 and 164, which provides a DC reference voltage to operational amplifier 176 during operation. The negative input of operational amplifier 178 is electrically connected between resistors 164 and 166, which provides a DC reference voltage to operational amplifier 178 during operation. The output of operational amplifiers 176 and 178 is connected with the oscillator 144, as set forth in detail below.

During operation, the control circuit 142 receives electrical signals from the control unit 102 and, in turn, acts as a window comparator that only switches when the input voltage produced by the control unit 102 is within a certain voltage window. The preferred signal from the control unit 102 is an AC signal that, together with its duty cycle, allows the control unit 102 to turn the ultraviolet lamp 60 on and off through the remaining components of the inductively coupled ballast circuit 103, as will be set forth below. The control circuit 142 also prevents false triggering and allows positive control if the control unit 102 fails.

As illustrated in FIG. 5, the first DC power source 180 and the second DC power source 184 provide power to the circuits depicted in FIG. 5. Those skilled in the art of electronics would recognize that DC power supply circuits are well known in the art and beyond the scope of the present invention. For the purposes of the present invention, it is important to note that such circuits exist and are capable of being designed to produce various DC voltage values from a given AC or DC power source. In the preferred embodiment of the invention, a +14VDC and a +19VDC signal is used, as indicated throughout the figures. Those skilled in the art would recognize that the circuits disclosed in FIG. 5 could be designed to operate on different DC voltage levels and that these values should not be construed as a limitation on the present invention.

In the preferred embodiment depicted in FIG. 5, the output of the control circuit 142 is connected with an interlock circuit 190 to prevent the ultraviolet lamp 60 from becoming energized if the water treatment system 10 is not properly assembled. The interlock circuit 190 includes a magnetic interlock sensor 192, a plurality of resistors 193, 194, 196, 198, 200, 202, 204, a transistor 206 and a diode 208. Referring to FIG. 1, in the preferred embodiment of the invention, the magnetic interlock sensor 192 is positioned so that if the top shroud 24 is not securely positioned on the inner sleeve shroud 26, the water treatment system 10 will not energize the ultraviolet lamp 60. However, those skilled in the art would recognize that the magnetic interlock sensor 192 may be placed in other convenient places of the water treatment system 10 as well.

Referring to FIG. 5, the magnetic interlock circuit 190 operates by directing the output of the control circuit 142 to the ground connection 182, through transistor 206, if the magnetic interlock sensor 192 detects that the water treatment system 10 is not assembled properly, as set forth above. As those skilled in the art would recognize, if the water treatment system 10 is not assembled properly, the output of the magnetic interlock sensor 192 causes the current flowing through resistors 194, 196 and 198 to energize the gate of transistor 206, which thereby shorts the output signal of the control circuit 142 to the ground connection 182. The magnetic interlock sensor 192 is powered by the second DC power source 184 through resistor 193 and is also connected with the ground connection 182. In addition, the magnetic interlock sensor 192 sends a signal to the control unit 102, through the combination of resistors 200, 202 and 204, diode 208, first DC power source 180 and second DC power source 184. This signal also allows the control unit 102 to determine when the water treatment assembly 10 is not assembled properly. To that end, the interlock circuit 190 provides two methods of ensuring that the ultraviolet lamp 60 is not energized if the water treatment system 10 is not assembled properly.

Referring once again to FIG. 5, the oscillator 144 provides electrical signals that energize the driver 146 while the water treatment system 10 is treating a flow of water. The oscillator 144 begins operating immediately once an electrical signal is sent from the control unit 102, through control circuit 142, as set forth above. The preferred oscillator 144 comprises an operational amplifier 210, a linear bias resistor 212, a buffer circuit 214, a buffer feedback protect circuit 216 and a positive feedback circuit 218. During operation, the operational amplifier 210 receives input signals from the control circuit 142, the linear bias resistor 212 and the positive feedback circuit 218. The operational amplifier 210 is also connected with the second DC power source 184 and the ground connection 182, which energizes the operational amplifier 210.

As illustrated in FIG. 5, the preferred buffer circuit 214 comprises a first transistor 220, a second transistor 222 and a pair of resistors 224, 226. The output of operational amplifier 210 is connected with the gates of transistors 220, 222, thereby controlling operation of transistors 220, 222. The second DC power source 184 is connected with resistor 224, which is also connected with collector of transistor 220. The emitter of transistor 220 is connected with resistor 226, the emitter of transistor 222 and the input of the driver 146. The collector of transistor 222 is connected with ground connection 182. During operation, the buffer circuit 214 buffers the output signal from the operational amplifier 210 and prevents load changes from pulling the frequency of oscillation. In addition, the buffer circuit 214 increases the effective gain of the inductively coupled ballast circuit 103, which helps ensure a quick start of the oscillator 144.

The buffer feedback protect circuit 216 comprises a pair of diodes 228, 230 that are electrically connected with the output of the buffer circuit 214 by resistor 226. As illustrated in FIG. 5, the second DC power source 184 is connected with the cathode of diode 228. The anode of diode 228 and the cathode of diode 220 are connected with resistor 226 and the linear bias resistor 212. The linear bias resistor 212 provides bias feedback signals to the negative input of operational amplifier 210. In addition, the anode of diode 230 is connected with ground connection 182, which completes the buffer feedback protect circuit 216. The buffer feedback circuit 216 protects the buffer circuit 214 from drain to gate Miller-effect feedback during operation of the water treatment system 10.

As illustrated in FIG. 5, the positive feedback circuit 218 includes a first multi-winding transformer 232, a plurality of resistors 234, 236, 238, a pair of diodes 240, 242, and a capacitor 244. The secondary of the transformer 232 is electrically connected with the output of the half-bridge switching circuit 148 and the input of the series resonant tank circuit 150 as illustrated in FIG. 5. In addition, one winding from each secondary coil of the multi-winding transformer 232 is connected to another winding of the opposite secondary coil in the transformer 232.

The first primary winding of transformer 232 is electrically connected with resistors 234, 236, 238, the diodes 240, 242 and the positive input of the operational amplifier 210. The second primary winding of the transformer 232 is connected with resistor 238, the cathode of diode 242, the anode of diode 240 and capacitor 244. As such, resistor 238 and diodes 242, 244 are connected in parallel with the first and second primary windings of transformer 232, as illustrated in FIG. 5. Capacitor 244 is also electrically connected with the negative input of operational amplifier 210. In addition, resistor 234 is connected with the second DC power source 184 and resistor 236 is connected with the ground connection 182. Resistors 234, 236 and 238 protect the operational amplifier 210 from current overload and diodes 240, 242 clip the feedback signal that is sent to the input of the operational amplifier 210.

During operation, the oscillator 144 receives signals from the control circuit 142 that charges capacitor 244, which, in turn, sends an electrical signal to the negative input of the operational amplifier 210. The output of the operational amplifier 210 is electrically directed to the driver 146, which energizes the half-bridge switching circuit 148. As illustrated in FIG. 5, the transformer 232 is connected in this current path and sends electrical signals back through resistors 234, 236 and 238, which limits the current, and eventually directs the electrical signal back to the inputs of the operational amplifier 210. Transformer 232 allows the oscil-

lator 144 to self-resonate and the inductively coupled ballast circuit 103 remains oscillating until the control unit 102 shuts the water treatment system 10 down or transistor 206 of the interlock circuit 190 pulls the input to the oscillator 144 low.

Referring once again to FIG. 5, the output of the oscillator 144 is electrically connected with the driver 146, which comprises the first primary winding of a second multi-winding transformer 246 in the preferred embodiment. The second transformer 246 is the preferred driver 146 because the phasing arrangement of the transformer 246 insures that the half-bridge switching circuit 148 will be alternately driven, which avoids shoot-through conduction. A double arrangement of capacitors 248, 250 is electrically connected with the second primary winding of transformer 246, thereby preventing DC current overflow in the transformer 246. Capacitor 246 is also connected with the ground connection 182 and capacitor 250 is also connected with the second DC power source 184.

Both secondary coils of transformer 246 are electrically connected with the half-bridge switching circuit 148, which receives energy from transformer 246 during operation. The half-bridge switching circuit 148, which is also illustrated in FIG. 5, is electrically arranged as a MOSFET totem pole half-bridge switching circuit 252 that is driven by both secondary coils of transformer 246. The MOSFET totem pole half-bridge switching circuit 252 includes a first MOSFET transistor 254 and a second MOSFET transistor 256 that provide advantages over conventional bipolar transistor switching circuits. Energy is transferred from the driver 146 to the MOSFET transistors 254, 256 through a plurality of resistors 258, 260, 262, 264. The MOSFET transistors 254, 256 are designed to soft-switch at zero current and exhibit only conduction losses during operation. The output generated by MOSFET transistors 254, 256 is more in the form of a sine wave that has fewer harmonics than that generated by traditional bipolar transistors. Using MOSFET transistors 254, 256 also provides advantages by reducing radio frequency interference that is generated by the MOSFET transistors 254, 256 while switching during operation.

In the preferred half-bridge switching circuit 148 depicted in FIG. 5, the first secondary coil of transformer 246 is connected with resistor 258 and resistor 260. The second secondary coil of transformer 246 is connected with resistor 262 and resistor 264. Resistor 260 is connected with the gate of MOSFET transistor 254 and resistor 264 is connected with the gate of MOSFET transistor 256. As illustrated, the first secondary coil of transformer 246 and resistor 258 are connected with the emitter of MOSFET transistor 254. The second secondary coil of transformer 246 and resistor 264 are connected with the gate of MOSFET transistor 256. The collector of MOSFET transistor 254 is connected with the second DC power source 184 and the emitter of MOSFET transistor 254 is connected with the collector of MOSFET transistor 256. The emitter of MOSFET transistor 256 and resistor 262 are connected with the ground connection 182.

A further benefit of the driver 146 is that multi-winding transformer 246 is a very convenient way to apply gate drive voltage to the MOSFET transistors 254, 256 that exceeds the second DC power source 184, which is a condition necessary for effective operation. The MOSFET transistors 254, 256 provide further advantages because they have diodes inherent in their design that protect the MOSFET totem pole half-bridge switching circuit 252 from load transients. In addition, over-voltages reflected from the series resonant tank circuit 150, by changes in load, are returned to supply rails by the inherent diodes within MOSFET transistors 254, 256.

Referring to FIG. 5, the output of the half-bridge switching circuit 148 is connected with the input of the series resonant tank circuit 150, which, in turn, inductively energizes the secondary coil 52 of the ultraviolet lamp assembly 14. As set forth above, in the preferred embodiment of the invention, the positive feedback circuit 218 of the oscillator 144 is connected with the output of the half-bridge switching circuit 148 and the input of the series resonant tank circuit 150 to provide feedback to operational amplifier 210 of the oscillator 144 during operation. However, the output of the half-bridge switching circuit 148 is connected with the input of the series resonant tank circuit 150 by the secondary coil of transformer 232 as illustrated in FIG. 5.

Referring to FIG. 5, the series resonant tank circuit 150 comprises an inductive coupler 270, the parallel combination of a pair of tank capacitors 271, 272, a pair of diodes 274, 276 and a capacitor 278. The inductive coupler 270 is connected with the secondary coil of transformer 232 and between tank capacitors 271, 272. Tank capacitor 271 is also connected with the second DC power source 184 and tank capacitor 272 is also connected with the ground connection 182. In addition, tank capacitor 271 and the second DC power source 184 are connected with the anode of diode 274. The cathode of diode 274 and capacitor 278 are both connected with the second DC power source 184. Capacitor 278 is connected with the anode of diode 276 and the ground connection 182. Tank capacitor 272 is also connected the cathode of diode 276.

It is important to note that the series resonant tank circuit 150 sees all of the stray inductances of the component combination of the inductively coupled ballast circuit 103. This is important because the stray inductance, which is the combined inductance seen by the series resonant tank circuit 150, will limit the power transfer dramatically to the load under any condition outside resonance. The inductance of the secondary coil 52 and the resonant lamp circuit 152 are also reflected impedance values that help determine and limit the power that is delivered to the secondary coil 52 of the ultraviolet lamp assembly. In general, brute force oscillator/transformer combinations have power transfer limits because of stray and reflected inductance. In other words, the inductance of transformers and capacitors appears in series with the load.

The frequency of operation for the series resonant tank circuit 150 is set near 100 KHz, which is determined by the inductance of the inductive coupler 270 and the parallel capacitance value of tank capacitors 271, 272, which are 0.1 uF capacitors in the preferred embodiment. Tank capacitors 271, 272 must have low dissipation factors and be able to handle high levels of current, which is about 14 amps at start up. This resonant frequency may be adjusted up or down and has been selected only for convenient component selections.

The inductive coupler 270 includes 10 turns of wire to generate the power required to inductively energize the secondary coil 52 in the ultraviolet lamp assembly 14. The inductive coupler 270 is positioned in the outlet cup 36 (see FIG. 2A) of the water treatment system 10 and wire is wrapped around the outlet cup 36 in a diameter of about 3.5 inches. In the preferred embodiment, litz wire is used for the inductive coupler 270 because litz wire is especially efficient in both performance and operating temperature, due to a fringing effect caused by the high currents that are created while operating at 100 kHz. As set forth above, the inductive coupler 270 inductively energizes the secondary coil 52 of the ultraviolet lamp assembly unit 14 during operation.

Referring to FIG. 2A, the secondary coil 52 of the ultraviolet lamp assembly unit 14 is positioned in the outlet

cup 36 and the inner sleeve shroud 26 when the water treatment system 10 is assembled. In the preferred embodiment, the secondary coil 52 has 55 turns of small diameter wire that is wrapped around the secondary coil 52 in a diameter of about two inches. It is important to note that the coupling between the outlet cup 36 and the base sub-assembly 50, which houses the secondary coil 52, is designed to be very tolerant of gaps and misalignment. In fact, gaps are used to adjust the coupling coefficient, thereby adjusting the operating point of the ultraviolet lamp 60. In addition, the present invention provides further advantages by providing a coupling that does not require special contacts for the ultraviolet lamp assembly 14 because of the inductively coupled ballast circuit 103.

As readily apparent to those skilled in the art, the inductively coupled ballast circuit 103 set forth above may be readily incorporated into other lighting systems and provides advantages over prior art ballast circuits because it drives lamps without requiring a physical connection. This allows the ultraviolet lamp assembly 14 to be readily replaced once the ultraviolet lamp 154 has reached the end of its operational life. The inductively coupled ballast circuit 103 is capable of instantaneously energizing several different styles of lamps or bulbs.

Referring once again to FIG. 5, the ballast feedback circuit 122 is electrically connected with the inductive coupler 270 of the series resonant tank circuit 150 and he control unit 102. The ballast feedback circuit 122 provides feedback to the control unit 102 while the inductively coupled ballast circuit 103 is driving the ultraviolet lamp 60. This allows the control unit 102 to monitor the energy being provided by the inductive coupler 270 to the secondary coil 52 of the ultraviolet lamp assembly 14. This provides the control unit 102 with the ability to determine if the ultraviolet lamp 60 is on or off and also, in other embodiments, the amount of current and voltage being applied to the ultraviolet lamp 60.

As depicted in FIG. 5, the ballast feedback circuit 122 includes an operational amplifier 280, a pair of resistors 282, 284, a pair of diodes 286, 288 and a capacitor 290. The signal from the series resonant tank circuit 150 is directed to the anode of diode 286. The cathode of diode 286 is connected with capacitor 290 and resistor 282. In addition, resistor 282 is connected with the anode of diode 288, resistor 284 and the positive input of operational amplifier 280. Resistor 284 is also connected with the positive input of operational amplifier 280 and the first DC power source 180. Capacitor 290 is also connected with the first DC power source 180, while the cathode of diode 288 is connected with the second DC power source 184. The negative input of operational amplifier 280 is connected directly with the output of operational amplifier 280. The output of operational amplifier 280 is connected with the control unit 102, thereby providing the feedback signal from operational amplifier 280 to the control unit 102.

Referring to FIG. 6, the ultraviolet lamp assembly 14 includes the ultraviolet lamp 60, the resonant lamp circuit 152 and the secondary coil 52. The ultraviolet lamp 60 comprises a pair of bulbs 300, 302 and a pair of filaments 304, 306. The bulbs 300, 302 are held together with an upper connection bracket 308 and a lower connection bracket 310. The secondary coil 52 is connected with the resonant lamp circuit 152, which, in turn, is connected with the filaments 304, 306 of the ultraviolet lamp 60. The resonant lamp circuit 152 comprises a capacitor 312 that is electrically connected with a starter circuit 314.

Although an ultraviolet lamp assembly 14 is set forth in the preferred embodiment of the present invention, as pre-

vously set forth, those skilled in the art would recognize that other electromagnetic radiation emitting assemblies may be used in the present invention. For example, the ultraviolet lamp assembly **14** may use a pulsed white light lamp or a dielectric barrier discharge lamp to deactivate microorganisms in the flow of water. Those skilled in the art would recognize that the inductively coupled ballast circuit **103** may be used to drive various types of electromagnetic radiation emitting devices that could be used in the present invention. As such, the present invention should not be construed to only cover water treatment systems that use an ultraviolet lamp assembly **14** that includes ultraviolet lamps **300**.

As illustrated in FIG. 7, the starter circuit **314** comprises a bridge rectifier circuit **320**, a silicon-controlled rectifier **322**, a series arrangement of diodes **324**, **326**, **328**, **330**, a triac **332**, a plurality of transistors **334**, **336**, a plurality of resistors **338**, **340**, **342**, **344**, **346** and a plurality of capacitors **348**, **350**. As those skilled in the art would recognize, the triac **332** may be any equivalent device, such as a FET transistor or a silicon controlled rectifier. In addition, those skilled in the art would recognize that the bridge rectifier circuit **320** comprises a plurality of diodes **352**, **354**, **356**, **358** that are connected with the filaments **304**, **306** of the ultraviolet lamp **60**.

Referring to FIG. 7, the bridge rectifier circuit **320** is connected with silicon-controlled rectifier **322**, resistor **338** and the ground connection **182**. Silicon-controlled rectifier **322** is also connected with the series arrangement of diodes **324**, **326**, **328**, **330** and the triac **332**, which are both also connected with the ground connector **182**. Resistor **338** is connected with triac **332**, resistor **340** and resistor **342**. Resistor **340** is connected with the collector of transistor **334**, the gate of transistor **336**, capacitor **348** and resistor **344**. Capacitor **348** and resistor **344** are further connected with the ground connection **182**. Resistor **342** is connected with the emitter of transistor **336** and capacitor **350**, which is also connected with the ground connection **182**. Triac **332** is connected with the emitter of transistor **334**, and the gate of transistor **334** is connected with the collector of transistor **336** and resistor **346**. Resistor **346** is connected with the ground connection **182** to complete the starter circuit **314**.

Referring back to FIG. 6, during operation, capacitor **312** changes and limits the current supplied to the ultraviolet lamp **60** from the secondary coil **52** by changing the reflected impedance of the ultraviolet lamp **60** through the inductive coupler **270** (see FIG. 5) of the series resonant tank circuit **150**. The starter circuit **314** is designed to short filaments **304**, **306** during start-up, thereby causing maximum preheat of the bulbs **300**, **302**. This allows the ultraviolet lamp **60** to strike maximum dispersion of the mercury in bulbs **300**, **302**, thereby causing maximum intensity and delivering the highest dose of ultraviolet light to the water as it passes through the ultraviolet lamp assembly **14**. In other words, the starter circuit **314** is designed so that the ultraviolet lamp **60** instantly turns on at maximum intensity. The placement of mercury in bulbs **300**, **302** is important for maximum output. When the mercury condenses within the plasma path, the mercury is dispensed more evenly throughout bulbs **300**, **302**. The faster dispersion also allows quicker peak intensity, thereby providing the ability to give the flow of water a faster, more intense dose of ultraviolet light at start-up.

Referring to FIG. 2B, the O-ring **62** acts as a heat sink and is purposefully placed between the path of water, which flows through the pair of quartz tubes **58**, and the ultraviolet lamp **60** plasma path to allow the mercury to condense

within the plasma path for improved instant ultraviolet light output. As the ultraviolet lamp **60** is energized, the full-circuit voltage potential is applied across capacitor **312**, filaments **304**, **306** and the starter circuit **314**. Because of the low impedance value of the filaments **304**, **306** and the starter circuit **314**, which acts as a short at start-up, the current is high for maximum preheat of the ultraviolet lamp **60**. This causes the preheat of the ultraviolet lamp **60** to disperse some initial mercury at start-up. When the starter circuit **314** heats up, the starter circuit **314** RC time constant releases the shorting device, which is the triac **332** in the preferred embodiment, thereby providing full voltage across the filaments **304**, **306**. The starter circuit **314** allows a better start than a thermister because thermisters consume more energy after opening and do not open as quickly.

Referring to FIG. 8, the preferred radio frequency identification system **124** is illustrated electrically connected with the control unit **102**. The radio frequency identification system **124** uses a base station to communicate with the ultraviolet light radio frequency identification transponder **126** and the filter radio frequency identification transponder **128**. The radio frequency identification system **124** allows contactless reading and writing of data, which is transmitted bi-directionally between the base station **360** and the transponders **126**, **128**. In the preferred embodiment, the radio frequency identification system **124** is manufactured by TENIC Semiconductors under model number TR5551A-PP.

The radio identification system **124** is used by the control unit **102** to keep track of information specific to each ultraviolet lamp assembly **14** and filter assembly **16**. As previously set forth, the ultraviolet lamp assembly **14** and the filter assembly **16** are both designed to be readily replaceable. Since the ultraviolet light radio frequency identification transponder **126** and the filter radio frequency identification transponder **128** are located in the ultraviolet lamp assembly **14** or the filter assembly **16**, these devices are never separated, which allows the control unit **102** to read and write information to and from the transponders **126**, **128** through the base station **360**.

Referring once again to FIG. 8, the ultraviolet light radio frequency identification transponder **126** includes a transponder antenna **362** and a read/write IDIC® (e5551) chip **364**. The read/write IDIC® (e5551) chip further includes an EPROM device **366** that physically stores the relevant information for each respective ultraviolet lamp assembly **14** in memory locations. In the presently preferred embodiment, the information consists of an ultraviolet lamp serial number, ultraviolet lamp start limit, ultraviolet lamp on-time limit, ultraviolet lamp install time limit, ultraviolet lamp cycle on-time, cycle mode low temperature, minimum ultraviolet lamp on-time, ultraviolet lamp high-mode time and ultraviolet lamp preheat time. In addition, the EEPROM device **366** in the ultraviolet light radio frequency identification transponder **126** allows the control unit **102** to keep track of ultraviolet lamp install time, ultraviolet lamp powered time, ultraviolet lamp starts and total ultraviolet lamp cold starts.

The ultraviolet lamp serial number is unique to each ultraviolet lamp assembly **14** and allows the control unit **102** of the water treatment system **10** to keep track of which ultraviolet lamp assemblies **14** have been installed in the water treatment system **10**. The ultraviolet lamp start limit relates to the maximum allowed number of ultraviolet lamp starts and the ultraviolet lamp on-time limit relates to the maximum allowed installation time for the ultraviolet lamp **60**. The ultraviolet lamp install time limit relates to the maximum allowable installation time for the ultraviolet

lamp assembly 14 and the ultraviolet lamp cycle on-time relates to the minimum amount of time the ultraviolet lamp 60 needs to be energized in low-temperature mode. The cycle mode low-temperature information relates to the temperature value to which the water treatment system 10 switches to low-temperature mode and the minimum ultraviolet lamp on-time relates to the minimum amount of time the ultraviolet lamp 60 must remain energized. The ultraviolet lamp high-mode time information relates to the amount of time the ultraviolet lamp 60 operates in high mode and the ultraviolet lamp preheat time relates to the amount of time the ultraviolet lamp 60 needs to be preheated.

As previously set forth, the EEPROM device 366 in the ultraviolet light radio frequency identification transponder 126 is also capable of keeping track of the ultraviolet lamp install time. This information tracks the number of hours that the current ultraviolet lamp 60 has been plugged into the water treatment system 10. In the preferred embodiment, for every minute the ultraviolet lamp 60 is plugged into the water treatment system 10, one minute is added to the total. The EEPROM device 366 also keeps track of the ultraviolet lamp powered time and the total ultraviolet lamp powered time. The ultraviolet lamp powered time and the total ultraviolet lamp powered time keeps track of the amount of time the ultraviolet lamp 60 has been on so that the control unit 102 can determine if a new ultraviolet lamp assembly 14 needs installed. The ultraviolet lamp starts memory location stores the number of times the ultraviolet lamp 60 has been started, so that the control unit 102 can use this information to determine the end of life of the ultraviolet lamp 60. The total ultraviolet lamp cold-starts memory location tracks the number of times the ultraviolet lamp 60 has been started when the ambient temperature sensor 114 indicates that the temperature is below a predetermined threshold value.

Referring once again to FIG. 8, the filter radio frequency identification transponder 128 includes a transponder antenna 368 and a read/write IDIC® (e5551) chip 370. The read/write IDIC® (e5551) chip 370 further includes an EEPROM device 372 that physically stores the relevant information for each respective filter assembly 16 in memory locations. In the present preferred embodiment, the relevant information consists of a filter assembly serial number, a filter assembly volume limit, a filter assembly install time limit, and a plugged filter assembly threshold percent.

The filter assembly serial number is used for unique identification of different filter assemblies 16 so that the control unit 102 can monitor which filter assemblies 16 to have been installed in the water treatment system 10. The filter assembly volume limit is associated with the volume of water the filter assembly is designed to filter before reaching the end of its useful life. The filter assembly install time limit is used by the control unit 102 to compute the remaining life of the filter assembly 16 based on a predetermined allowable wet time. The plugged filter assembly threshold percent contains the maximum allowable percentage of flow reduction for the filter assembly 16 before it needs replaced. This maintains the percent of degradation of the filter assembly 16 before a plugged filter assembly 16 error is initiated by the control unit 102.

The radio frequency identification system 124 includes the base station 360, a coil 380, a plurality of diodes 382, 384, 386, 388, 390, 392, 394, a plurality of resistors 396, 398, 400, 402, 404, 406, 408, 410, 412, 414, 416, 418, 420 and a plurality of capacitors 422, 424, 426, 428, 430, 432, 434, 436 that are electrically connected as illustrated in FIG.

8. Those skilled in the art would recognize that the connection of the aforementioned components is well known to those skilled in the art. The radio frequency identification system 124 has been installed in the water treatment system 10 using specifications set forth for the TK5551A-PP, which, as previously set forth, is manufactured by TEMIC Semiconductors. For the purpose of the present invention, it is important to note that the base station 360 uses the coil 380 for bi-directional communication with the ultraviolet light radio frequency identification transponder 126 and the filter radio frequency identification transponder 128.

The control unit 102 is electrically connected with the base station 360 so that the control unit 102 can communicate with the base station 360. As such, the control unit 102 is capable of reading and writing information to and from the ultraviolet light radio frequency identification transponder 126 and the filter radio frequency identification transponder 128 through the base-station 360 by using the coil 380. The radio frequency identification system 124 is connected with the first DC power source 180 and the second DC power source 184 as illustrated in FIG. 8, which provides the radio frequency identification system 124 with energy to function during operation.

Those skilled in the art would recognize that other identification systems could be used with the present invention, such as contact-type identification systems. However, the present preferred embodiment of the invention uses a radio frequency identification system 124 because of the inherent benefits such a system provides.

Referring to FIG. 9, the flow sensor circuit 104 is connected with the control unit 102 to provide electrical signals to the control unit 102 indicating that water is flowing through the water treatment system 10. The flow sensor circuit 104 includes a flow sensor 440, a plurality of capacitors 442, 444 and a resistor 446. The flow sensor is manufactured by Allegro under model number 3134. Capacitor 442 is connected with the flow sensor 440, the first DC power source 180 and the second DC power source 184. The output of the flow sensor 440 is connected with the parallel combination of resistor 446 and capacitor 444, before being connected with the control unit 102. Resistor 446 and capacitor 444 are also connected with the second DC power source 184. During operation, the flow sensor 440 delivers electrical signals to the control unit 102, which indicates that water is flowing in the water treatment system 10, thereby causing the control unit 102 to instantaneously energize the ultraviolet lamp 60. Those skilled in the art would recognize that several variations exist on the disclosed flow sensor circuit 104 and that the disclosed flow sensor circuit 104 is provided by way of example only and should be not construed as a limitation of the present invention.

Referring to FIG. 10, the ambient light sensor circuit 108 comprises a photosensitive diode 450, an operational amplifier 452, a plurality of resistors 454, 456, 458, 460, a diode 462 and a capacitor 464 electrically connected as illustrated. For purposes of the present invention, it is sufficient to note that the photosensitive diode 450 provides electrical signals to the negative input of the operational amplifier 452, which, in turn, conditions the signal for the control unit 102. The ambient light sensor circuit 108 is powered by the first DC power source 180 and the second DC power source 184. Those skilled in the art would recognize that several variations exist on the design of ambient light sensor circuits 108 and that the presently disclosed preferred embodiment should not be construed as a limitation on the present invention.

Referring to FIG. 11, as previously set forth, the visible light sensor circuit 110 is connected with the control unit 102

to provide electrical signals to the control unit **102** corresponding to the intensity of the ultraviolet lamp **60** during operation. In the preferred embodiment, the visible light sensor circuit **110** comprises a photosensitive resistor **470**, an operational amplifier **472**, a diode **474**, a plurality of resistors **476, 478, 480, 482, 484, 486** and a capacitor **488** electrically connected as depicted in FIG. **11**. In addition, the visible light sensor circuit **110** is powered by the first DC power source **180** and the second DC power source **184**. Those skilled in the art would recognize that the visible light sensor circuit **110** takes the electrical signal generated by the photosensitive resistor **470** and amplifies it with the operational amplifier **472**, before being directed to the control unit **102**. Further, those skilled in the art would recognize that the design of visible light sensor circuits **110** can vary and that the disclosed ultraviolet light sensor circuit **110** is by way of example only and should not be construed as a limitation of the present invention.

Referring to FIG. **12**, as previously set forth, the preferred ambient temperature sensor circuit **114** is connected with the control unit **102** to provide the control unit **102** with electrical signals that change with corresponding changes in the ambient temperature. The ambient temperature sensor circuit **114** comprises a thermistor **490**, an operational amplifier **492**, a plurality of resistors **494, 496, 498** and a capacitor **500** that are electrically connected as illustrated in FIG. **12**. During operation, the voltage drop across thermistor **490** changes as the ambient temperature changes, thereby causing the electrical signal that is sent from the output of the operational amplifier **492** to the control unit **102** to either increase or decrease. Those skilled in the art would recognize that the design of ambient temperature sensor circuits **114** can vary. The preferred ambient temperature sensor circuit **114** illustrated in FIG. **12** is by way of example only and should not be construed as a limitation of the present invention.

Referring to FIG. **13**, as previously set forth, the preferred audio generation circuit **116** is connected with the control unit **102** for generating audible enunciations in response to predetermined system states. The preferred audio generation circuit **116** comprises a piezoelectric element **510**, a plurality of transistors **512, 514, 516**, a plurality of resistors **518, 520, 522, 524, 526, 528, 530, 532, 534**, a plurality of capacitors **536, 538** and a diode **540**, which are electrically connected as depicted in FIG. **13**. As readily apparent to those skilled in the art, the control unit **102** is capable of energizing the piezoelectric element **510**, thereby causing the piezoelectric element **510** to generate audible tones through vibrations. Those skilled in the art would recognize that several devices and circuits exist that are capable of generating audible tones. The presently disclosed audio generation circuit **116** is by way of example only and likewise should not be construed as a limitation of the present invention.

Referring to FIG. **14**, as previously set forth, the communications port **120** is connected with the control unit **102**. The communications port **120** is used by the control unit **102** to communicate bi-directionally with a peripheral device (not shown), such as a personal computer or a hand-held device. In the preferred embodiment, the communications port **120** comprises a plurality of zenar diodes **550, 552, 554** and a plurality of resistors **556, 558, 560, 562, 564, 566, 568, 570**, which are electrically connected as illustrated in FIG. **14**. The first DC power source **180** and the second DC power source **184** provide power to the communications port **120**. The communications port **120** is designed to use the RS-232 communications standard, as well known in the art. A port connector **572** is provided so that the peripheral device can

be connected with the communications port **120**. Those skilled in the art would recognize that different types of communication ports may be used and are beyond the scope of the present invention. To that end, the preferred communications port **120** disclosed herein is by way of example only and should not be construed as a limitation of the present invention.

While the invention has been described in its currently best known modes of operation and embodiments, other modes and embodiments of the invention will be apparent to those skilled in the art and are contemplated. In addition, although the preferred embodiment of the present invention is directed to a water treatment system **10**, those skilled in the art would recognize that the present invention may be readily incorporated in several different types of fluid treatment systems.

What is claimed is:

1. A method of providing electromagnetic radiation in a fluid treatment system, comprising the steps of:

generating a predetermined electric signal with a control unit;

directing said predetermined electric signal to an inductively coupled ballast circuit; and

inductively energizing an electromagnetic radiation emitting device in said inductively coupled ballast circuit in response to said predetermined electric signal from said control unit.

2. The method of claim **1**, wherein said electromagnetic emitting device is an ultraviolet lamp.

3. The method of claim **1**, wherein said electromagnetic emitting device is a pulsed white light lamp.

4. The method of claim **1**, wherein said electromagnetic emitting device is a dielectric barrier discharge lamp.

5. The method of claim **1**, wherein said inductively coupled ballast circuit includes a control circuit, an oscillator, a driver, a half-bridge switching circuit, a series resonant tank circuit, a secondary coil, a resonant lamp circuit and said electromagnetic radiation emitting device.

6. The method of claim **5**, wherein said series resonant tank circuit is inductively coupled with said secondary coil.

7. The method of claim **5**, wherein said oscillator includes a buffer circuit that prevents load changes from pulling the frequency of oscillation of said oscillator.

8. The method of claim **5**, wherein said driver comprises a multi-winding transformer.

9. The method of claim **5**, wherein said half-bridge switching circuit comprises a MOSFET totem pole half-bridge switching circuit.

10. The method of claim **5**, wherein said series resonant tank circuit comprises an inductive coupler, a pair of tank capacitors, a pair of diodes and a capacitor.

11. The method of claim **5**, wherein said resonant lamp circuit comprises a capacitor and a starter circuit.

12. The method of claim **1**, further comprising the step of directing a feedback signal to said control unit with a ballast feedback circuit electrically connected with said inductively coupled ballast circuit and said control unit.

13. The method of claim **12**, further comprising the step of adjusting the intensity of said electromagnetic radiation emitting device based on said feedback signal using said control unit.

14. The method of claim **1**, further comprising the step of generating said redetermined electric signal with said control unit in response to a signal from a flow sensor circuit.

21

15. A fluid treatment system, comprising:
 a control unit;
 an inductively coupled ballast circuit that is inductively coupled with an electromagnetic radiation emitting assembly; and
 wherein said inductively coupled ballast circuit inductively energizes an electromagnetic radiation emitting device in said electromagnetic radiation emitting assembly in response to a predetermined electric signal from said control unit.
16. The fluid treatment system of claim 15, wherein said electromagnetic radiation emitting assembly is replaceable.
17. The fluid treatment system of claim 15, wherein said electromagnetic radiation emitting device is an ultraviolet lamp.
18. The fluid treatment system of claim 15, wherein said electromagnetic radiation emitting device is a pulsed white light lamp.
19. The fluid treatment system of claim 15, wherein said electromagnetic radiation emitting device is a dielectric barrier discharge lamp.
20. The fluid treatment system of claim 15, wherein said inductively coupled ballast circuit includes a control circuit, an oscillator, a driver, a half-bridge switching circuit, a series resonant tank circuit, a secondary coil, a resonant lamp circuit and said electromagnetic radiation emitting device.
21. The fluid treatment system of claim 20, wherein said series resonant tank circuit is inductively coupled with said secondary coil for energizing said electromagnetic radiation emitting device.
22. The fluid treatment system of claim 20, wherein said oscillator includes a buffer circuit that prevents load changes from pulling the frequency of oscillation of said oscillator.
23. The fluid treatment system of claim 20, wherein said driver comprises a multi-winding transformer.
24. The fluid treatment system of claim 20, wherein said half-bridge switching circuit comprises a MOSFET totem pole half-bridge switching circuit.
25. The fluid treatment system of claim 20, wherein said series resonant tank circuit comprises an inductive coupler, a pair of tank capacitors, a pair of diodes and a capacitor.
26. The fluid treatment system of claim 20, wherein said resonant lamp circuit comprises a capacitor and a starter circuit.
27. The fluid treatment system of claim 15, further comprising a flow sensor circuit electrically connected with said control unit, wherein said flow sensor is used to cause said control unit to energize said inductively coupled ballast circuit.
28. The fluid treatment system of claim 15, further comprising a display electrically connected with said control unit.
29. The fluid treatment system of claim 15, further comprising an electromagnetic radiation sensor circuit electrically connected with said control unit.
30. The fluid treatment system of claim 29, wherein said electromagnetic radiation sensor circuit is a visible light sensor.
31. The fluid treatment system of claim 15, further comprising an ambient temperature sensor circuit electrically connected with said control unit.
32. The fluid treatment system of claim 15, further comprising a ballast feedback circuit electrically connected with said inductively coupled ballast circuit and said control unit for providing feedback to said control unit during operation.
33. A method of providing electromagnetic radiation in a fluid treatment system, comprising the steps of:

22

- generating a predetermined signal with a control unit;
 directing said predetermined signal to a ballast circuit that includes an inductive coupler in an outlet cup;
 positioning an electromagnetic radiation emitting assembly in an inductive coupling arrangement with said outlet cup, wherein said electromagnetic radiation emitting assembly includes a secondary coil connected to an electromagnetic radiation emitting device; and
 energizing said electromagnetic radiation emitting device in response to said predetermined signal from said control unit, wherein said secondary coil is inductively energized by said inductive coupler thereby energizing said electromagnetic radiation emitting device.
34. The method of claim 33, wherein positioning said electromagnetic radiation emitting assembly comprises setting the impedance of said electromagnetic radiation emitting assembly reflected to said inductive coupler to maximize power transfer at a resonant frequency.
35. The method of claim 33, wherein energizing said electromagnetic radiation emitting device comprises limiting current supplied to said electromagnetic radiation emitting device with a capacitor connected in series with said electromagnetic radiation emitting device.
36. The method of claim 33, wherein energizing said electromagnetic radiation emitting device comprises self oscillating said ballast circuit at a resonant frequency.
37. The method of claim 33, wherein energizing said electromagnetic radiation emitting device comprises providing power for said electromagnetic radiation emitting device at a resonant frequency of said electromagnetic radiation emitting assembly.
38. The method of claim 33, wherein positioning said electromagnetic radiation emitting assembly in said inductive coupling arrangement comprises adjusting a coupling coefficient by selection of a gap between said inductive coupler and said secondary coil, wherein an operating point of said electromagnetic radiation emitting device is adjustable as a function of said coupling coefficient.
39. The method of claim 33, wherein energizing said electromagnetic radiation emitting device comprises maintaining a resonant frequency of said ballast circuit as a function of impedance reflected by said electromagnetic radiation emitting assembly to said ballast circuit.
40. A fluid treatment system for providing electromagnetic radiation of a fluid, the fluid treatment system comprising:
 a control unit;
 a ballast circuit connected to said control unit, wherein said ballast circuit includes an inductive coupler in an outlet cup;
 an electromagnetic radiation emitting assembly having a secondary coil that is connected to an electromagnetic radiation emitting device; and
 wherein said inductive coupler inductively energizes said secondary coil in response to a predetermined signal from said control unit, thereby energizing said electromagnetic radiation emitting device in said electromagnetic radiation emitting assembly.
41. The fluid treatment system of claim 40, wherein said secondary coil is positioned adjacent said inductive coupler to form a coupling coefficient, an operating point of said electromagnetic radiation emitting device adjustable as a function of said coupling coefficient.
42. The fluid treatment system of claim 40, wherein said ballast circuit further comprises a tank capacitor, a resonant frequency determined as a function of said inductive

coupler, said tank capacitor and said electromagnetic radiation emitting assembly.

43. The fluid treatment system of claim 40, wherein said electromagnetic radiation emitting assembly further comprises a starter circuit and a capacitor, said capacitor electrically connected in series with said electromagnetic radiation emitting device to adjust an impedance reflected to said ballast circuit.

44. The fluid treatment system of claim 40, wherein said ballast circuit is operable to maintain a resonate frequency as a function of reflected impedance of said electromagnetic radiation emitting device.

45. The fluid treatment system of claim 40, further comprising a radio frequency identification system operable to communicate with said electromagnetic radiation emitting device via wireless communications and provide operational information of said electromagnetic radiation emitting device to said control unit.

46. The fluid treatment system of claim 45, further comprising a filter assembly, said radio frequency identification system operable to communicate with said filter assembly via wireless communications and provide operational information of said filter assembly to said control unit.

47. A method of providing electromagnetic radiation in a fluid treatment system, comprising:

providing a ballast circuit having an inductive coupler in an outlet cup;

placing a replaceable electromagnetic radiation emitting assembly including a secondary coil connected to an electromagnetic radiation emitting device in an inductively coupled arrangement with said inductive coupler; and

energizing said inductive coupler thereby inductively energizing said secondary coil to illuminate said electromagnetic radiation emitting device.

48. The method of claim 47, wherein energizing said inductive coupler comprises shorting said electromagnetic radiation emitting device to a ground connection to maximize current in said secondary coil during startup.

49. The method of claim 48, wherein shorting said electromagnetic radiation emitting device comprises maximizing preheat of said electromagnetic radiation emitting device during startup.

50. The method of claim 48, wherein shorting said electromagnetic radiation emitting device comprises removing said short at a predetermined time to lower said current and provide full voltage to said electromagnetic radiation emitting device.

51. The method of claim 47, wherein placing said replaceable electromagnetic radiation emitting assembly in an inductively coupled arrangement comprises configuring said ballast circuit and said replaceable electromagnetic radiation emitting assembly with a similar resonant frequency.

52. The method of claim 47, wherein placing said replaceable electromagnetic radiation emitting assembly in an inductively coupled arrangement comprises positioning said secondary coil within said outlet cup.

53. The method of claim 47, wherein providing a ballast circuit having an inductive coupler in an outlet cup comprises wrapping wire around said outlet cup at a predetermined diameter to form said inductive coupler.

54. The method of claim 47, wherein said secondary coil is formed by wrapping wire in a predetermined diameter as a function of the configuration of said inductive coupler.

55. The method of claims 47, further comprising removing said secondary coil from said inductively coupled arrangement with said inductive coupler when replacement of said replaceable electromagnetic radiation emitting assembly is desired.

56. A fluid treatment system for providing electromagnetic radiation of a fluid, the fluid treatment system comprising:

a ballast circuit having an inductive coupler in an outlet cup; and

a replaceable electromagnetic radiation emitting assembly having a secondary coil connected to an electromagnetic radiation emitting device, wherein said inductive coupler is operable to inductively energize said secondary coil thereby energizing said electromagnetic radiation emitting device.

57. The fluid treatment system of claim 56, further comprising a gap between said inductive coupler and said secondary coil, an operating point of said electromagnetic radiation emitting device adjustable as a function of said gap.

58. The fluid treatment system of claim 56, wherein said outlet cup is formed to detachably accommodate said secondary coil within said outlet cup.

59. The fluid treatment system of claim 56, wherein said replaceable electromagnetic radiation emitting assembly comprises a starter circuit operable to short said electromagnetic radiation emitting device to a ground connection during startup to maximize current flow from said secondary coil.

* * * * *